

# GODREJ NIRVAAN

THANE EXTENSION

Where  
wishes  
come  
true

*Godrej* | PROPERTIES

Stock image for representative purpose only.

The project is registered as Godrej Nirvaan under MahaRERA No. P51700022148 available at <http://maharera.mahaonline.gov.in>  
The project is being developed by "Prakhayat Dwellings LLP" in which Godrej Properties Limited is a partner.

# GODREJ PROPERTIES

Pan-India Presence | Cutting-edge Design | Quality Construction | Legacy of 122 years | India's first ISO-certified Real Estate Developer



Actual photograph



Stock image for representative purpose only.

# A LEGACY OF TRUST SPANNING 122 YEARS

Godrej Properties brings the Godrej Group philosophy of innovation, sustainability, and excellence to the real estate industry. Each Godrej Properties development combines a 122-year legacy of excellence and trust with a commitment to cutting-edge design and technology.

In recent years, Godrej Properties has received over 200 awards and recognitions, including 'The Premium Real Estate Company of the Year 2017' at Corporate Livewire Awards, 'Professional Excellence in Real Estate' at the ABP News Real Estate Awards 2016, 'Real Estate Company of the Year' at the Construction Week India Awards 2015, 'Most Reliable Builder' at the CNBC Awaaz Real Estate Awards 2014 and the 'Innovation Leader in Real Estate' at the NDTV Property Awards 2014.

IN THE LAST 5 YEARS, GODREJ PROPERTIES HAS RECEIVED OVER 200 AWARDS & RECOGNITIONS

 <b>BEST REAL ESTATE BRAND</b> 	 <b>REAL ESTATE COMPANY OF THE YEAR</b> 	 <b>BUILDER OF THE YEAR</b> 
<b>THE ECONOMIC TIMES 2018</b>	<b>8TH ANNUAL CONSTRUCTION WEEK INDIA AWARDS 2018</b>	<b>CNBC-AWAAZ REAL ESTATE AWARDS 2018</b>
 <b>INDIA'S TOP BUILDERS</b> 	 <b>GOLDEN PEACOCK NATIONAL QUALITY AWARD</b> 	
<b>CONSTRUCTION WORLD ARCHITECT AND BUILDER (CWAB) AWARDS 2018</b>	<b>INSTITUTE OF DIRECTORS 27<sup>TH</sup> WORLD CONGRESS ON BUSINESS EXCELLENCE AND INNOVATION 2017</b>	

A nighttime photograph of a city skyline with a prominent highway interchange in the foreground. The sky is dark blue, and the city lights are visible. The highway interchange is illuminated with warm yellow lights, and there are light trails from cars moving through the curves. The text is overlaid on the image in two white boxes with yellow borders.

**THANE  
IS EXTENDING  
ITS PRESENCE  
AND A WARM  
WELCOME  
TO YOU**

**WELCOME  
TO  
THANE  
EXTENSION**



# THANE EXTENSION- THE RISING FUTURE DESTINATION

Just

**20 minutes\***

to the busy  
Majiwada Circle  
and the green stretches of  
Ghodbunder Road

\*Approximate travel time calculated as per Google Maps, subject to change as per traffic conditions.

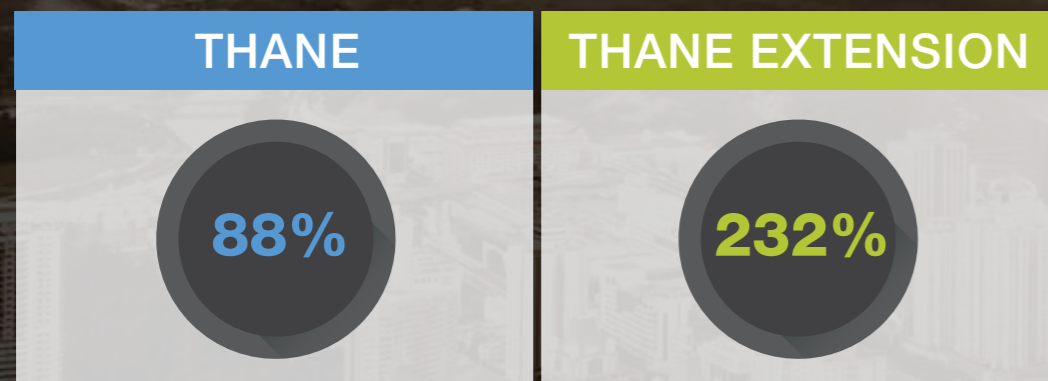
Stock image for representative purpose only.

# THANE EXTENSION – A GROWING RESIDENTIAL HUB

Over the last

## 6 Years

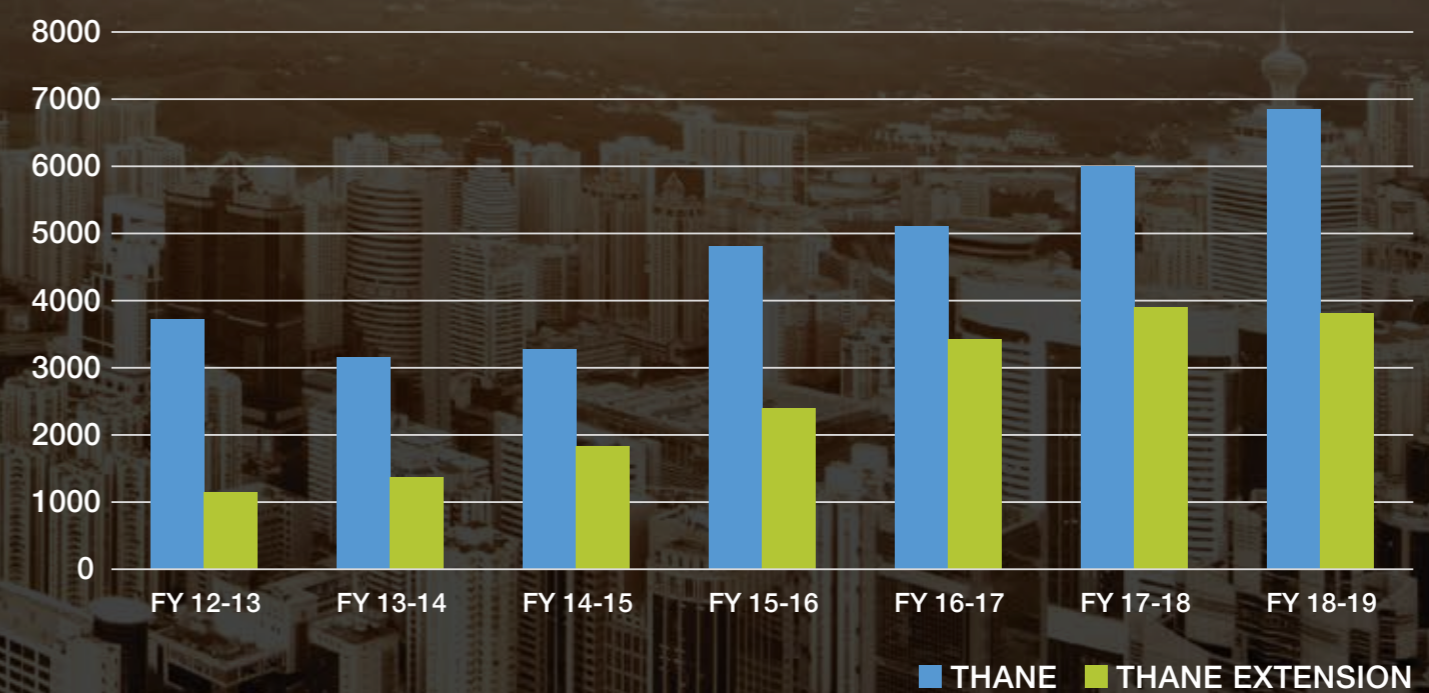
percentage growth in apartments bought



Thane extension has retained a CAGR of greater than **20% in the past 5 years**

Source:- Liases Foras

## APARTMENTS BOUGHT



Stock image for representative purpose only.

# WITNESS THE BIRTH OF THE HUB OF THE FUTURE: THANE EXTENSION

UPCOMING METRO LINE 5<sup>^</sup>

IMPROVED CONNECTIVITY TO THANE

Metro line 5 will run from

## Thane to Kalyan,

through Bhiwandi.

MMRDA on 7<sup>th</sup> August 2019 announced  
the construction of Metro line 5  
to start post monsoon.<sup>#</sup>

Metro Line 5 will be connected with  
Metro Line 4 and Metro Line 12\*



<sup>\*</sup><https://indianexpress.com/article/cities/mumbai/mumbai-thane-bhiwandi-kalyan-metro-construction-start-after-monsoon-5884119/>

<sup>^</sup><https://mmrda.maharashtra.gov.in/metro-line-5#>

<sup>#</sup><https://www.moneylife.in/article/maharashtra-clears-three-new-metro-routes-worth-rs24000-crore-for-mumbai/57748.html>

## THANE-DOMBIVLI

### BRIDGE\*

The 980-metre-long-bridge is proposed to reduce travel time from Mankoli to Dombivili to

**5 minutes.**

8 LANE 126 KM LONG

### VIRAR ALIBAUG CORRIDOR#

MMRDA has planned a

**126 km long, 8 lane,**

Virar – Alibaug corridor which will connect several critical towns such as

Virar, Panvel, Bhiwandi, Kalyan, Pen, Uran and Alibaug.

## THE KALYAN

### BUSINESS DISTRICT^

The project will come up with the South Korean government's assistance and will be completed by 2028 with an investment of

**₹56,676-crore.**


**Over 330 hectares**

of land have been earmarked for this project.

\*<https://maharashtratimes.indiatimes.com/maharashtra/thane-kokan-news/thane/new-contractor-for-mankoli-bridge/articleshow/66940395.cms>  
<https://www.hindustantimes.com/mumbai-news/state-gives-nod-to-grant-1-44-acre-of-mangrove-land-for-thane-dombivli-bridge/story-LPYxxSMOf3eup1qCf4OrsN.html>

#<https://www.hindustantimes.com/mumbai-news/virar-alibaug-corridor-in-fast-lane-maharashtra-govt-seeks-14-000-cr-loan-from-world-bank/story-EcYUuVdMKR4Kl9R8Ok9ZoM.html>

^<https://epaper.timesgroup.com/Olive/ODN/TimesOfIndia/shared/ShowArticle.aspx?doc=TOIM%2F2018%2F04%2F07&entity=Ar05503&sk=E73935FF&mode=text>



WELCOME  
TO  
GODREJ NIRVAAN

Where  
wishes  
come  
true

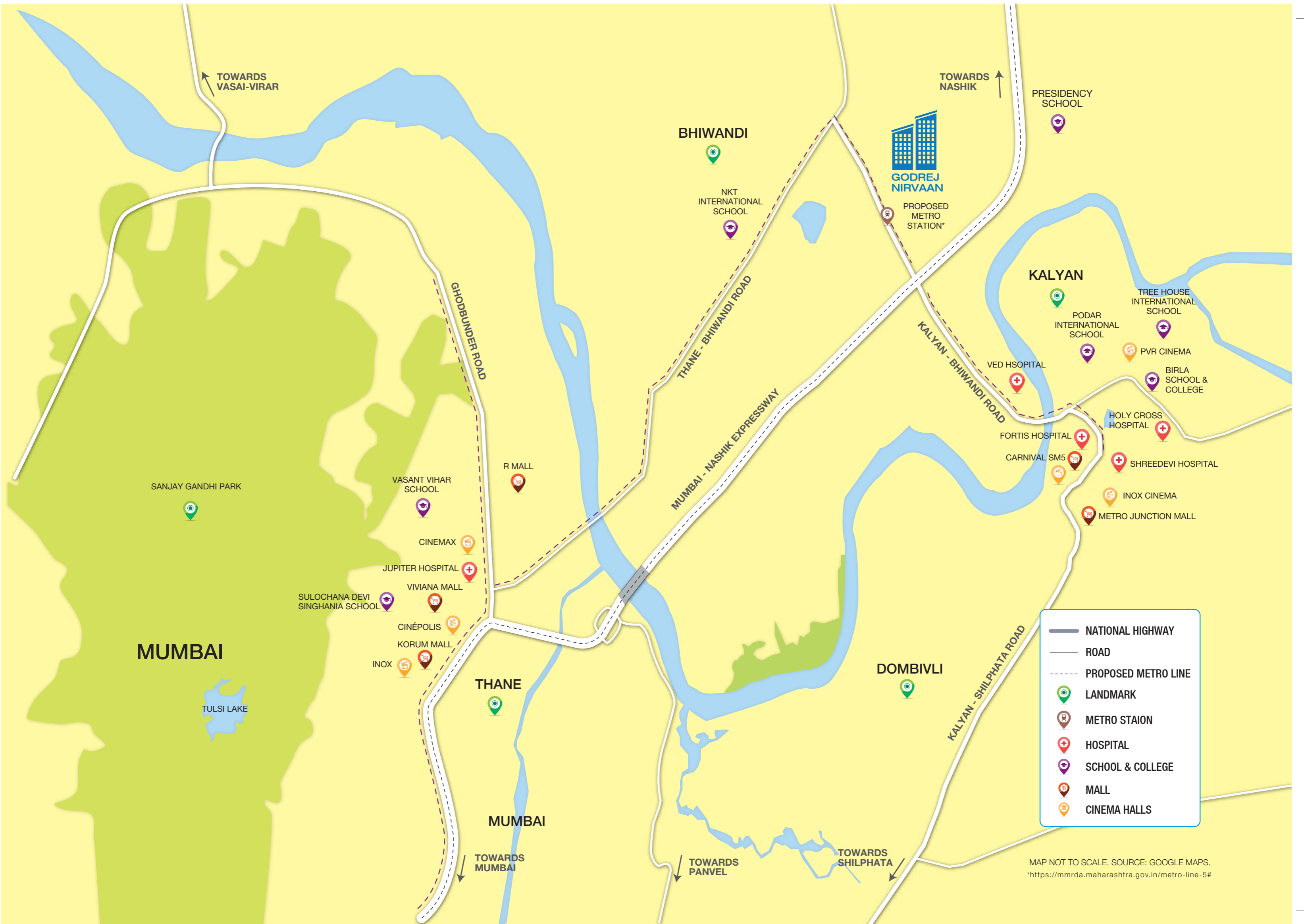
Artist's impression. Not an actual site photograph.



## EVERY WISH, FULFILLED

Godrej Nirvaan is a world in itself and every square inch of the development has been designed to make your life complete. This world has everything you need, and everything you'll ever want. Be it the playing spaces for your kids, senior citizen park for your parents, proximity to business hubs or a star gazing deck for your better half, no matter what your wish is, Godrej Nirvaan makes it come true.

Stock image for representative purpose only.



	NATIONAL HIGHWAY
	ROAD
	PROPOSED METRO LINE
	LANDMARK
	METRO STATION
	HOSPITAL
	SCHOOL & COLLEGE
	MALL
	CINEMA HALLS

MAP NOT TO SCALE. SOURCE: GOOGLE MAPS.  
 \*<https://mmrda.maharashtra.gov.in/metro-line-5#>

# CONNECT WITH THE WORLD

## EASY ACCESSIBILITY TO

Pune, Nashik, Goa and Ahmedabad

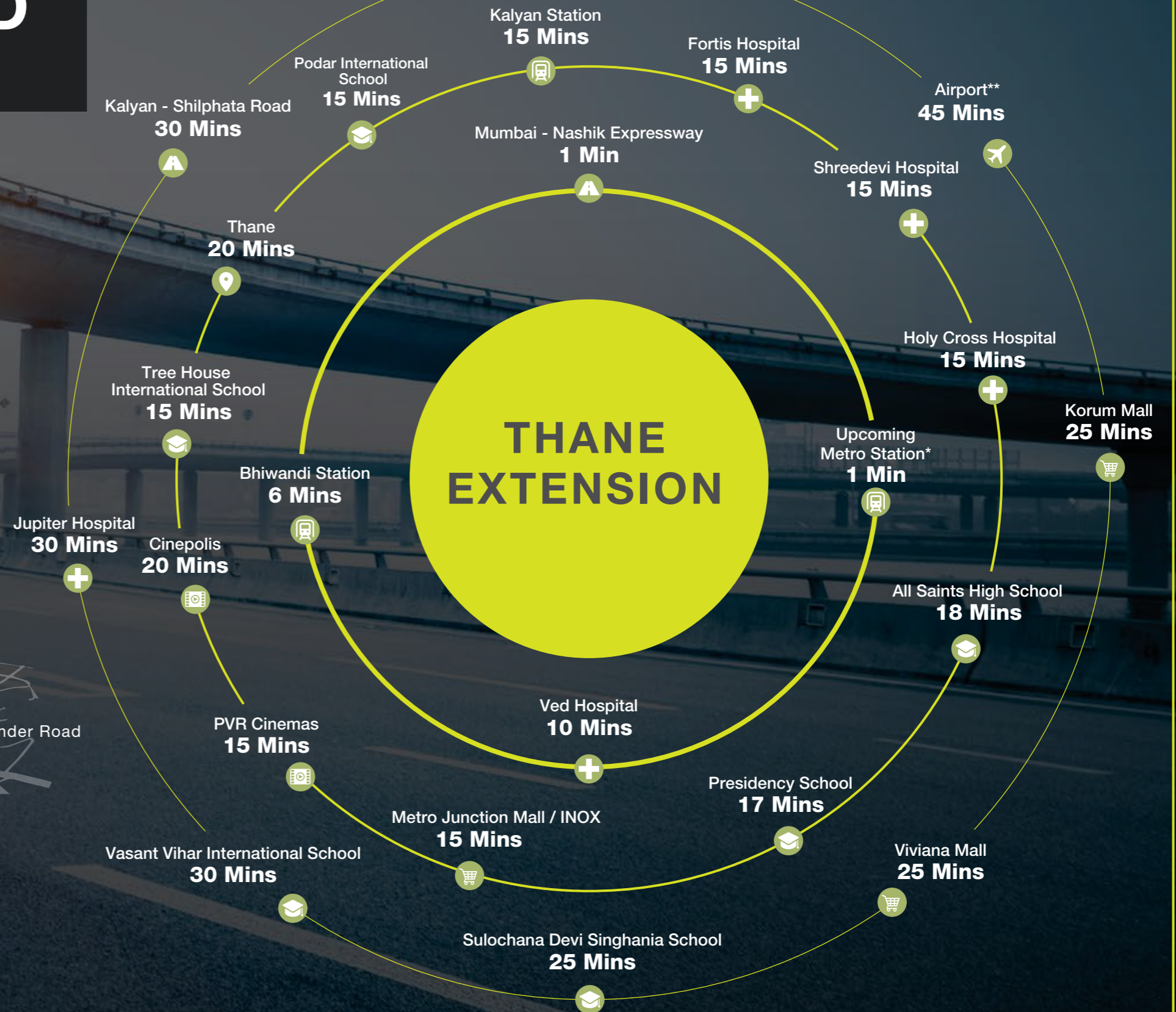


1 - 10 mins

10 - 20 mins

> 20 mins

## THANE EXTENSION

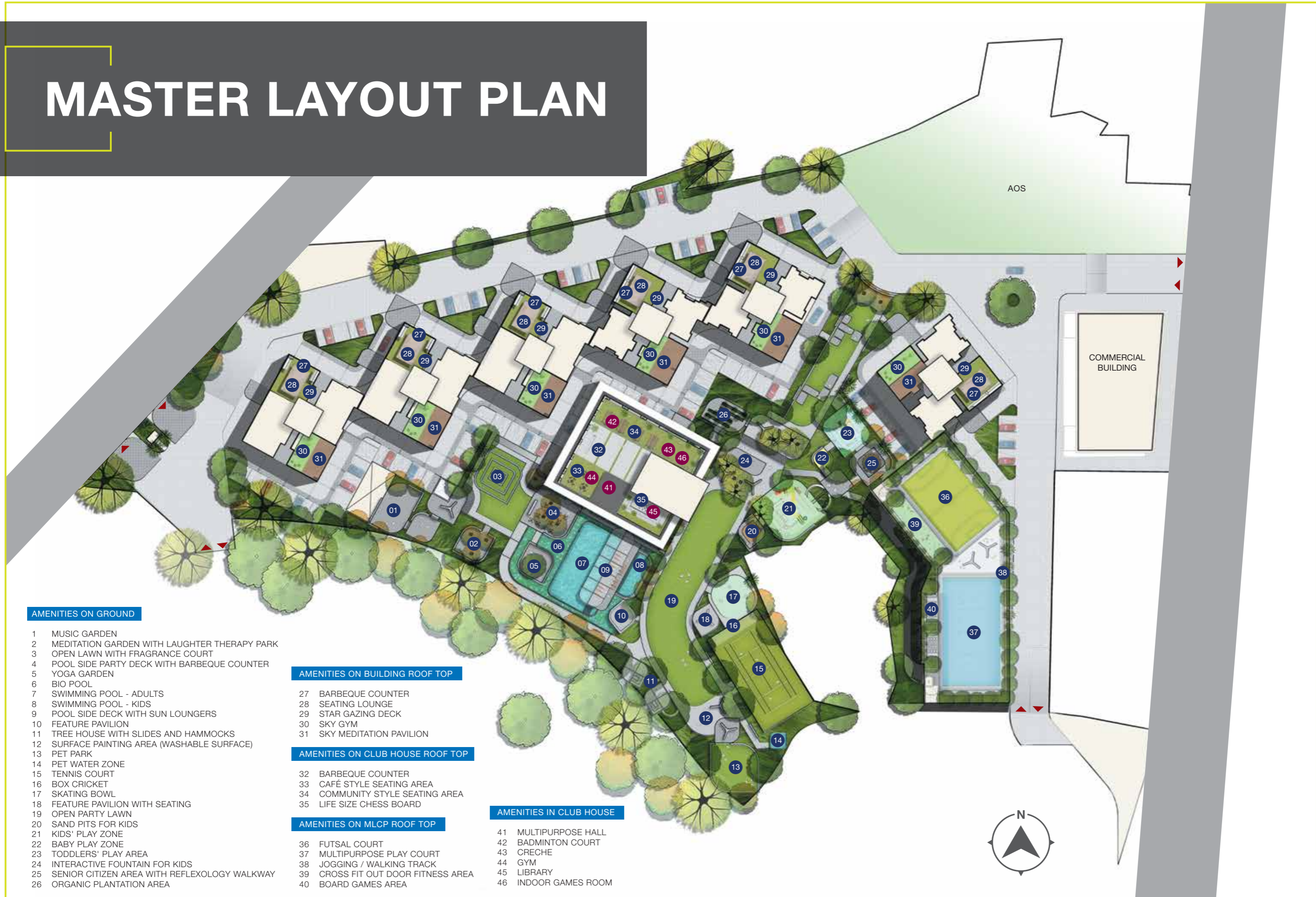


Source: Google Maps. Travel time basis normal traffic conditions.

\*<https://mmrda.maharashtra.gov.in/metro-line-5#>

\*\*<https://economictimes.indiatimes.com/news/politics-and-nation/pm-narendra-modi-lays-foundation-stone-of-navi-mumbai-international-airport/articleshow/62970239.cms>

# MASTER LAYOUT PLAN



## AMENITIES ON GROUND

- 1 MUSIC GARDEN
- 2 MEDITATION GARDEN WITH LAUGHTER THERAPY PARK
- 3 OPEN LAWN WITH FRAGRANCE COURT
- 4 POOL SIDE PARTY DECK WITH BARBEQUE COUNTER
- 5 YOGA GARDEN
- 6 BIO POOL
- 7 SWIMMING POOL - ADULTS
- 8 SWIMMING POOL - KIDS
- 9 POOL SIDE DECK WITH SUN LOUNGERS
- 10 FEATURE PAVILION
- 11 TREE HOUSE WITH SLIDES AND HAMMOCKS
- 12 SURFACE PAINTING AREA (WASHABLE SURFACE)
- 13 PET PARK
- 14 PET WATER ZONE
- 15 TENNIS COURT
- 16 BOX CRICKET
- 17 SKATING BOWL
- 18 FEATURE PAVILION WITH SEATING
- 19 OPEN PARTY LAWN
- 20 SAND PITS FOR KIDS
- 21 KIDS' PLAY ZONE
- 22 BABY PLAY ZONE
- 23 TODDLERS' PLAY AREA
- 24 INTERACTIVE FOUNTAIN FOR KIDS
- 25 SENIOR CITIZEN AREA WITH REFLEXOLOGY WALKWAY
- 26 ORGANIC PLANTATION AREA

## AMENITIES ON BUILDING ROOF TOP

- 27 BARBEQUE COUNTER
- 28 SEATING LOUNGE
- 29 STAR GAZING DECK
- 30 SKY GYM
- 31 SKY MEDITATION PAVILION

## AMENITIES ON CLUB HOUSE ROOF TOP

- 32 BARBEQUE COUNTER
- 33 CAFÉ STYLE SEATING AREA
- 34 COMMUNITY STYLE SEATING AREA
- 35 LIFE SIZE CHESS BOARD

## AMENITIES ON MLCP ROOF TOP

- 36 FUTSAL COURT
- 37 MULTIPURPOSE PLAY COURT
- 38 JOGGING / WALKING TRACK
- 39 CROSS FIT OUT DOOR FITNESS AREA
- 40 BOARD GAMES AREA

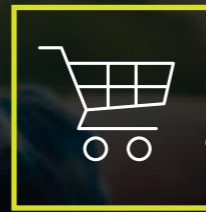
## AMENITIES IN CLUB HOUSE

- 41 MULTIPURPOSE HALL
- 42 BADMINTON COURT
- 43 CRECHE
- 44 GYM
- 45 LIBRARY
- 46 INDOOR GAMES ROOM

This is an artist's impression indicating the anticipated appearance of the ongoing development. The information is presented as general information and no warranty is expressly or impliedly given that the completed development will comply in any degree with such artist's impression or anticipated appearance.

# YOUR WISHES FULFILLED

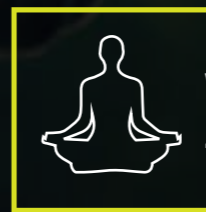
We offer you the lifestyle you wished for, with a host of amenities. Be it the shimmering cool water of the pool to refresh, the surface painting area for your kids to unveil their creativity or the laughter therapy park for your parents to relax, every amenity is designed to fulfil your family's wish list.



**CONVENIENCE  
ZONE**



**SPORTS  
ZONE**



**WELLNESS  
ZONE**



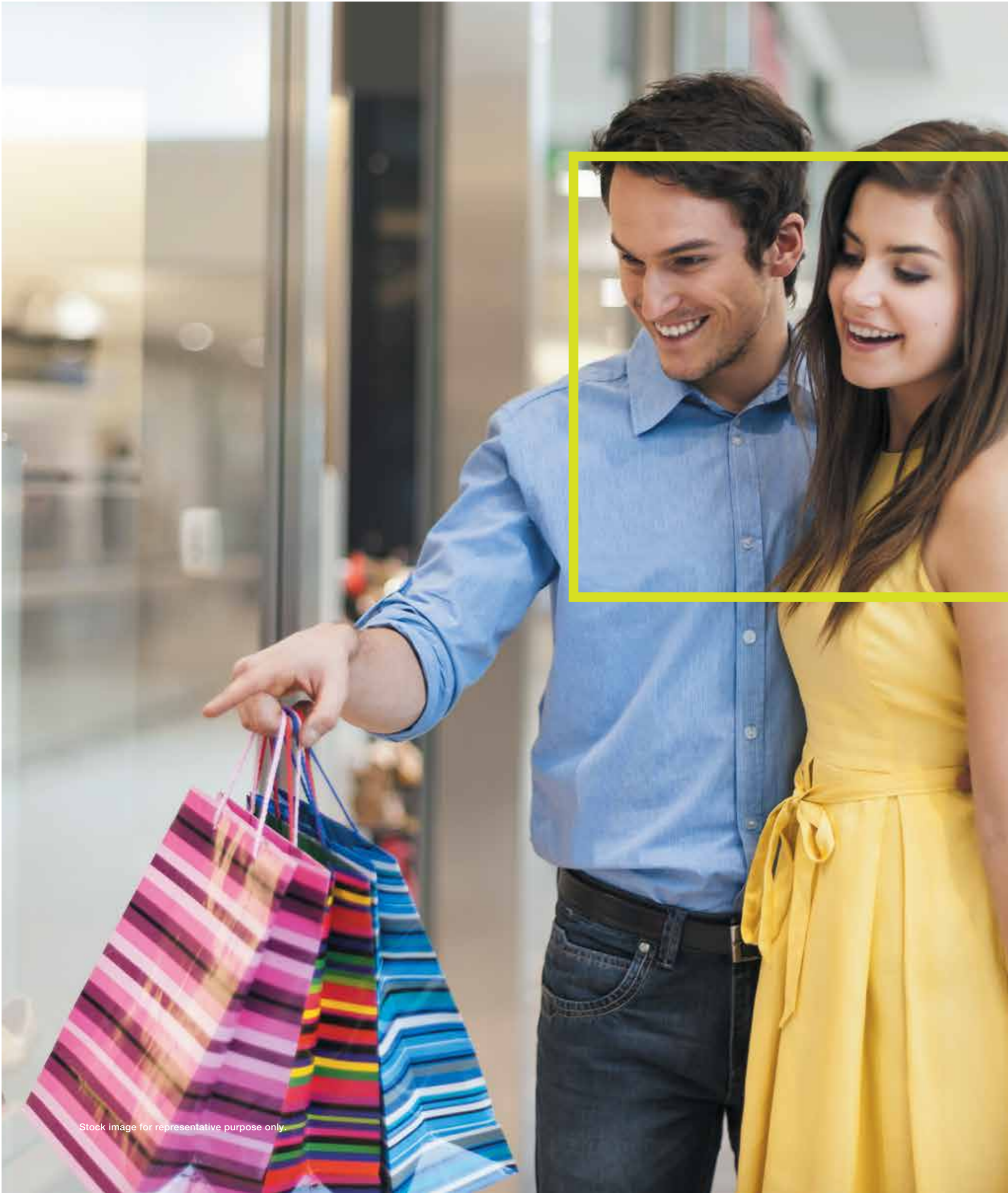
**FESTIVE  
ZONE**



**KIDS'  
ZONE**



**SKY  
ZONE**



Stock image for representative purpose only.

## CONVENIENCE ZONE WITH 24x7 CONCIERGE SERVICE

We understand how occupied you are with your busy lives, hence we offer you all the conveniences at your doorstep.

- Convenience Store
  - Shuttle Service
  - Pharmacy
  - ATM
  - Retail Outlet
-



## 24x7 CONCIERGE SERVICE

- Bill Payment Service
- Entertainment/Events
- Gifting Services
- Courier Services
- Visa and Travel Ticket Booking
- Banking Services
- Pest Control
- Handy Man Services

The following Services shall be on "No charge" basis. No Charge means the Service Provider shall NOT charge any money for the Services (as mentioned above) rendered by them to the flat purchasers of the Client. The flat purchasers need to pay only for the actual cost of the service availed (E.g. Actual price of movie ticket, Utility Bill amount, etc.) No transportation/incidental expenses are charged for the Services rendered.

[Subject to Availability of the tickets/services & also depending on the acceptable mode of payment]

Stock images for representative purpose only.

# CONVENIENCE STORE



Stock image for representative purpose only.

# SHUTTLE SERVICE



Stock image for representative purpose only.



# PHARMACY

Stock image for representative purpose only.

ATM



Stock image for representative purpose only.



**4000 SQ. FT. RETAIL OUTLET**  
**(371.61 SQ. MT.)**

Stock image for representative purpose only.



## SPORTS ZONE

Your entire family will live the high-spirited life with sporting activities for every member.

- Futsal Court
  - Tennis Court
  - Gym
  - Jogging/Walking Track
  - Half Olympic Size Swimming Pool
  - Badminton Court
  - Skating Bowl
  - Box Cricket
  - Life Size Chess Board
  - Multipurpose Play Court
  - Cross Fit Outdoor Fitness Area
  - Board Games Area
  - Indoor Games Room
-



# FUTSAL COURT

Stock image for representative purpose only.

# TENNIS COURT



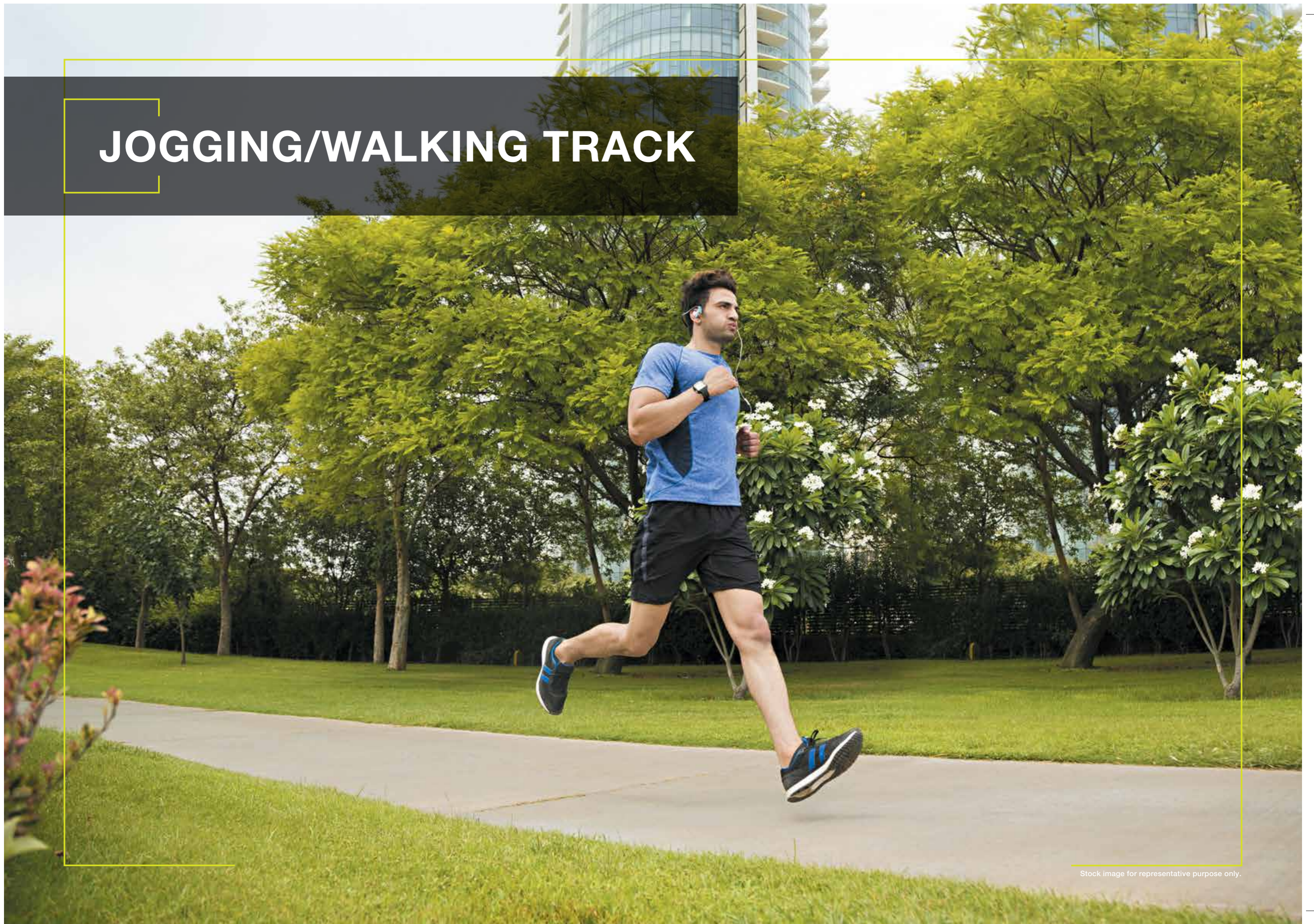
Artist's impression. Not an actual site photograph.



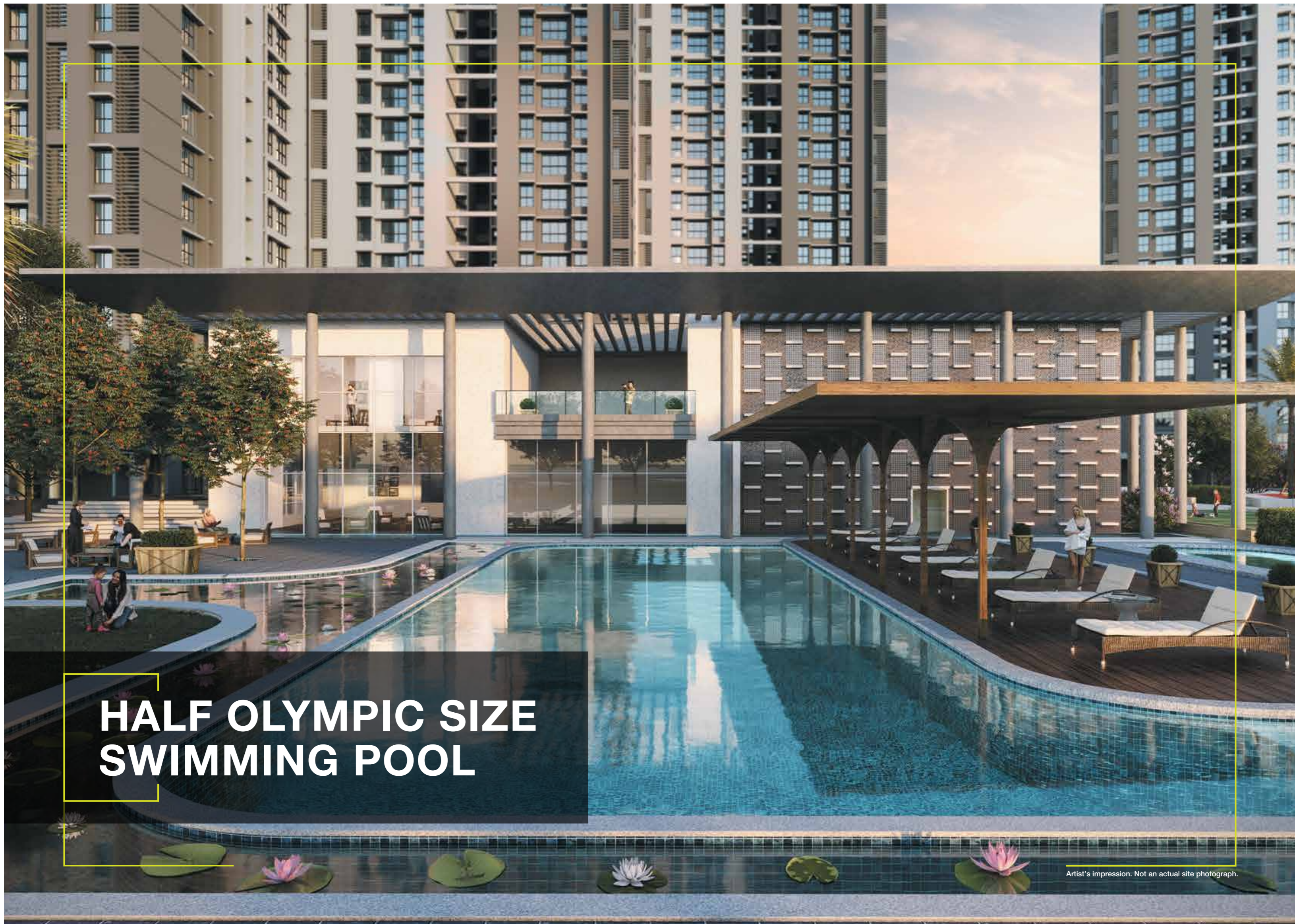
**GYM**

Stock image for representative purpose only.

# JOGGING/WALKING TRACK



Stock image for representative purpose only.



# HALF OLYMPIC SIZE SWIMMING POOL

Artist's impression. Not an actual site photograph.

# BADMINTON COURT



Stock image for representative purpose only.

A young child is roller skating in a bowl. The child is wearing a blue helmet, a blue denim jacket over a white shirt, orange pants, and blue roller skates. They are in a dynamic pose, leaning forward with one leg extended back. The background shows a blurred metal fence and a clear blue sky. The text 'SKATING BOWL' is overlaid on a dark grey box in the bottom left corner.

# SKATING BOWL

Stock image for representative purpose only.



## KIDS' ZONE

With open spaces and a lot of running around, childhood here will be as it is supposed to be.

- Swimming Pool for Kids
- Surface Painting Area
- Kids' Play Zone
- Crèche
- Interactive Fountain for Kids
- Tree House with Slides and Hammocks
- Sand Pits for Kids
- Toddlers' Play Area
- Baby Play Zone

# SWIMMING POOL FOR KIDS



Stock image for representative purpose only.

# SURFACE PAINTING AREA



Stock image for representative purpose only.



# KIDS' PLAY ZONE

Stock image for representative purpose only.

# CRÈCHE



Stock image for representative purpose only.

A young child with dark hair, wearing an orange tank top and white shorts with a blue pattern, is laughing joyfully while playing in a water fountain. The child is standing in the center of the frame, with water spraying upwards around them. The background is a blurred park setting with green trees and other people. The entire image is framed by a thin yellow border.

# INTERACTIVE FOUNTAIN FOR KIDS

Stock image for representative purpose only.



# TREE HOUSE WITH SLIDES AND HAMMOCKS

Artist's impression. Not an actual site photograph.



## WELLNESS ZONE

Relax and take in the radiance of the setting sun as you meditate amidst the greens; and laugh away your worries at the laughter park.

- Yoga Garden
  - Senior Citizen Area with Reflexology Walkway
  - Music Garden
  - Meditation Garden with Laughter Therapy Park
  - Open Lawn with Fragrance Court
  - Bio Pool
  - Organic Plantation Area
  - Library
  - Pet Water Zone
  - Pet Park
-

# YOGA GARDEN



Stock image for representative purpose only.



# SENIOR CITIZEN AREA WITH REFLEXOLOGY WALKWAY

Stock image for representative purpose only.

# MUSIC GARDEN



Stock image for representative purpose only.



# MEDITATION GARDEN WITH LAUGHTER THERAPY PARK

Stock image for representative purpose only.



Stock image for representative purpose only.

## FESTIVE ZONE

Be the perfect host for your guests with the right settings for social gatherings.

- Open Party Lawn
- Pool side Party deck with Barbeque Counter
- Multipurpose Hall
- Café Style Seating Area
- Barbeque Counter
- Feature Pavilion with Seating
- Community Style Seating Area



# OPEN PARTY LAWN

Stock image for representative purpose only.

# POOL SIDE PARTY DECK WITH BARBEQUE COUNTER



Artist's impression. Not an actual site photograph.



# MULTIPURPOSE HALL

Stock image for representative purpose only.

# CAFÉ STYLE SEATING AREA



Stock image for representative purpose only.



## SKY ZONE

Meditate at sunrise, party under the moon, spend some time at the sky zone.

- Star Gazing Deck
  - Sky Meditation Pavilion
  - Sky Gym
  - Sky-Seating Lounge
-

# STAR GAZING DECK



Stock image for representative purpose only.



# SKY MEDITATION PAVILION

Stock image for representative purpose only.

# SKY GYM



Stock image for representative purpose only.



**GODREJ NIRVAAN**  
**WHERE WISHES COME TRUE**

Stock image for representative purpose only.

# GODREJ NIRVAAN

## THANE EXTENSION

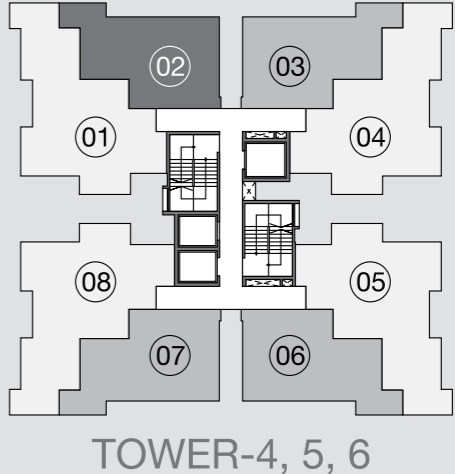
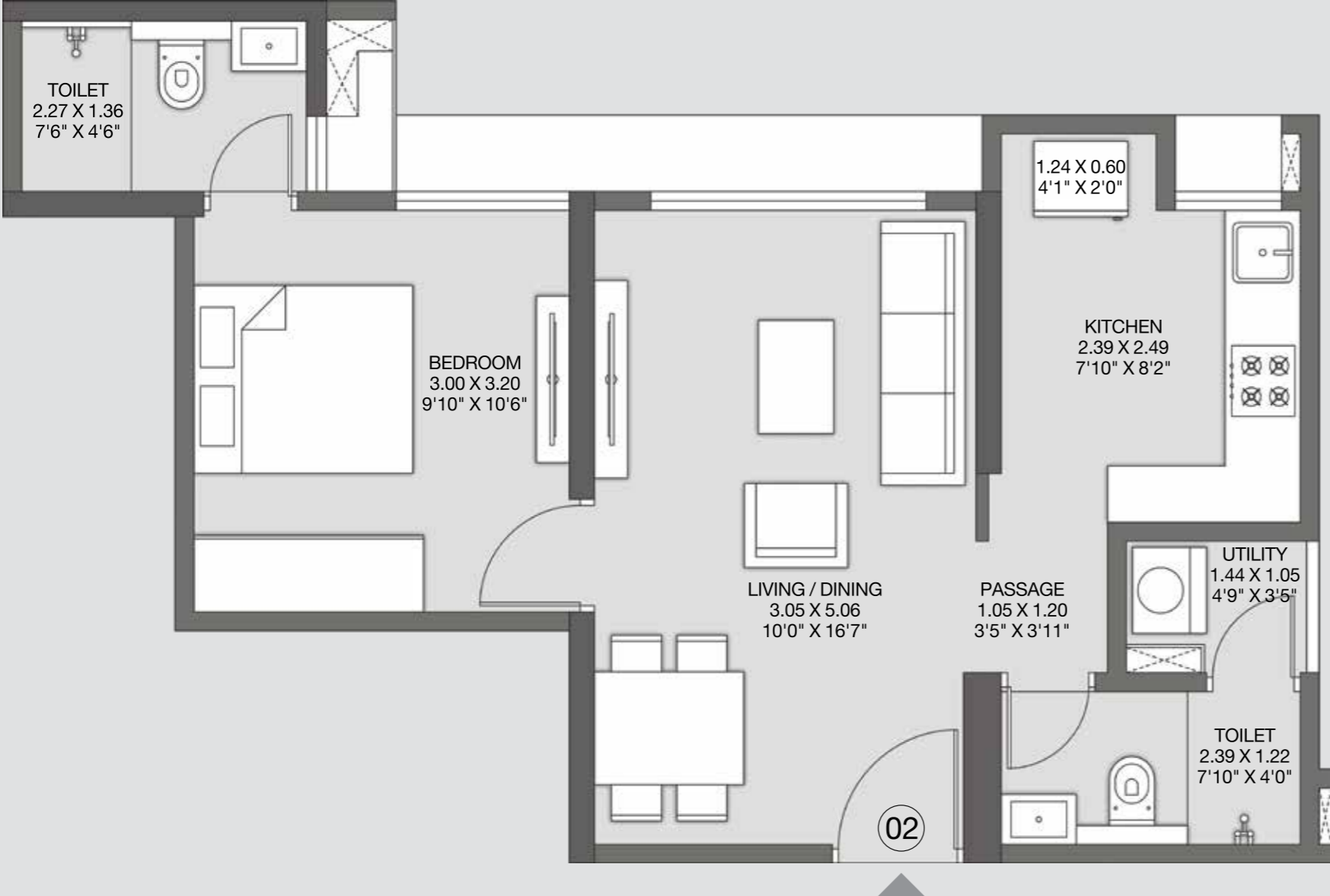


Artist's Impression. Not an actual site photograph.

# UNIT PLANS

# GODREJ NIRVAAN THANE EXTENSION

**1 LUXE**

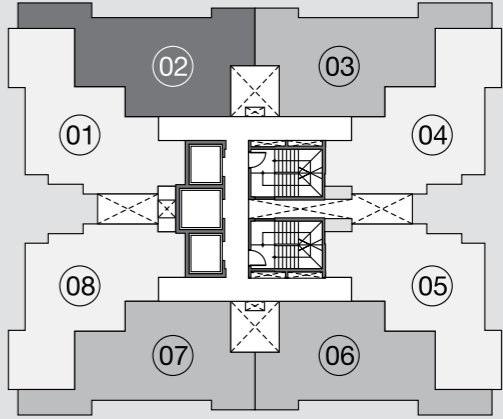
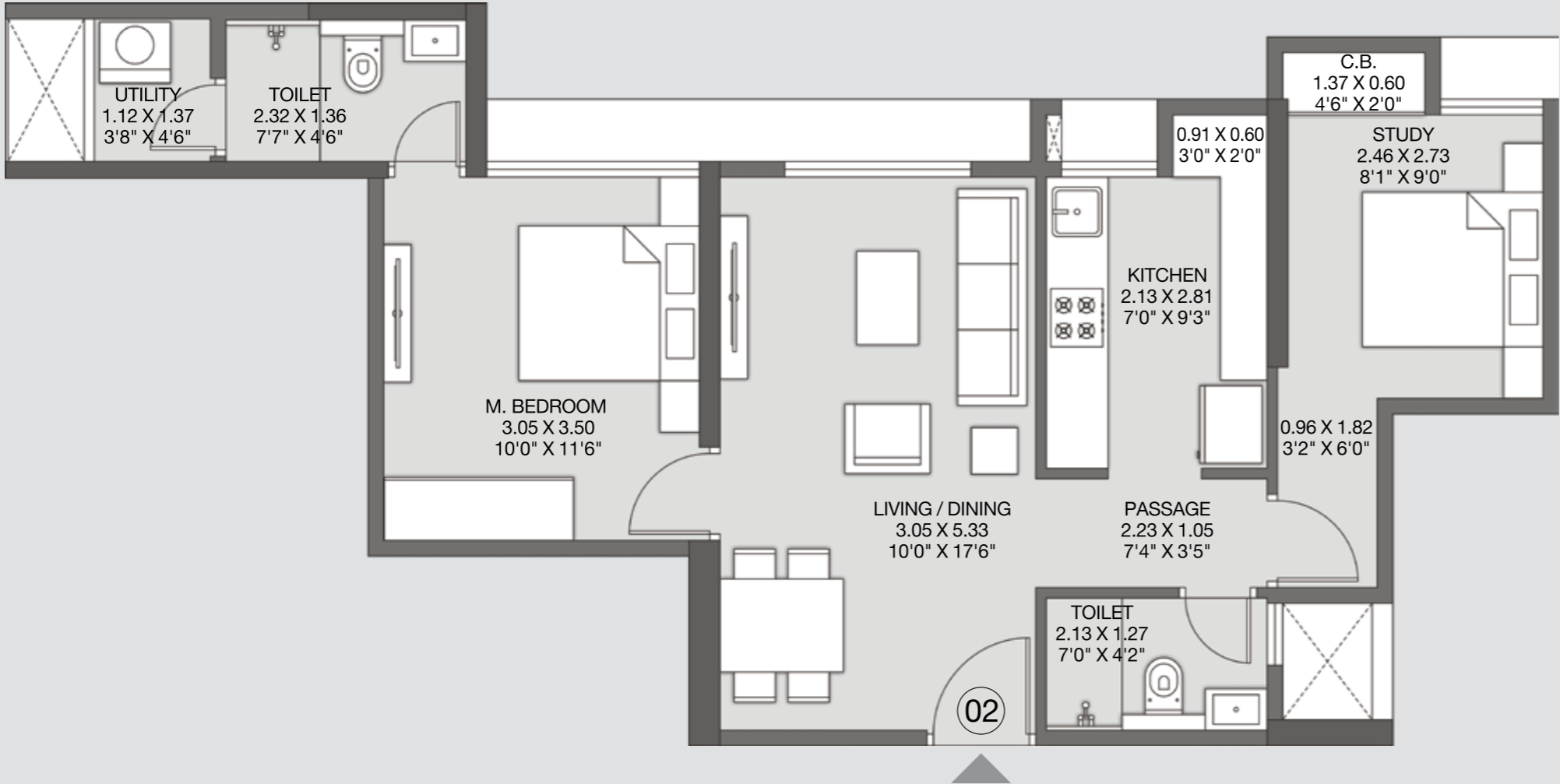


1 Sq. m. = 10.764 Sq. ft.

The furniture, decorative items, etc. shown in the plan are only suggested and the same are not intended or obligated to be provided as per specifications and/or service in the flat/unit and does not form part of the standard specifications. The plan represents unit series 2 of Tower/Wing 4 to 9

# GODREJ NIRVAAN THANE EXTENSION

## 2 PREMIUM

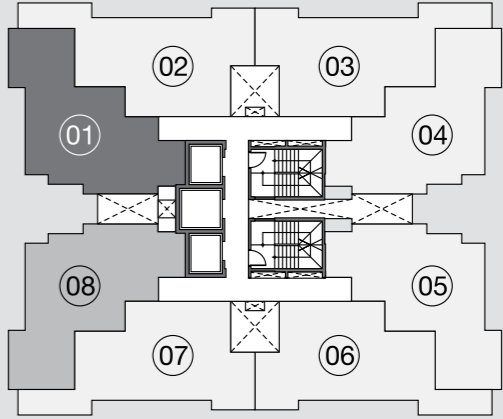
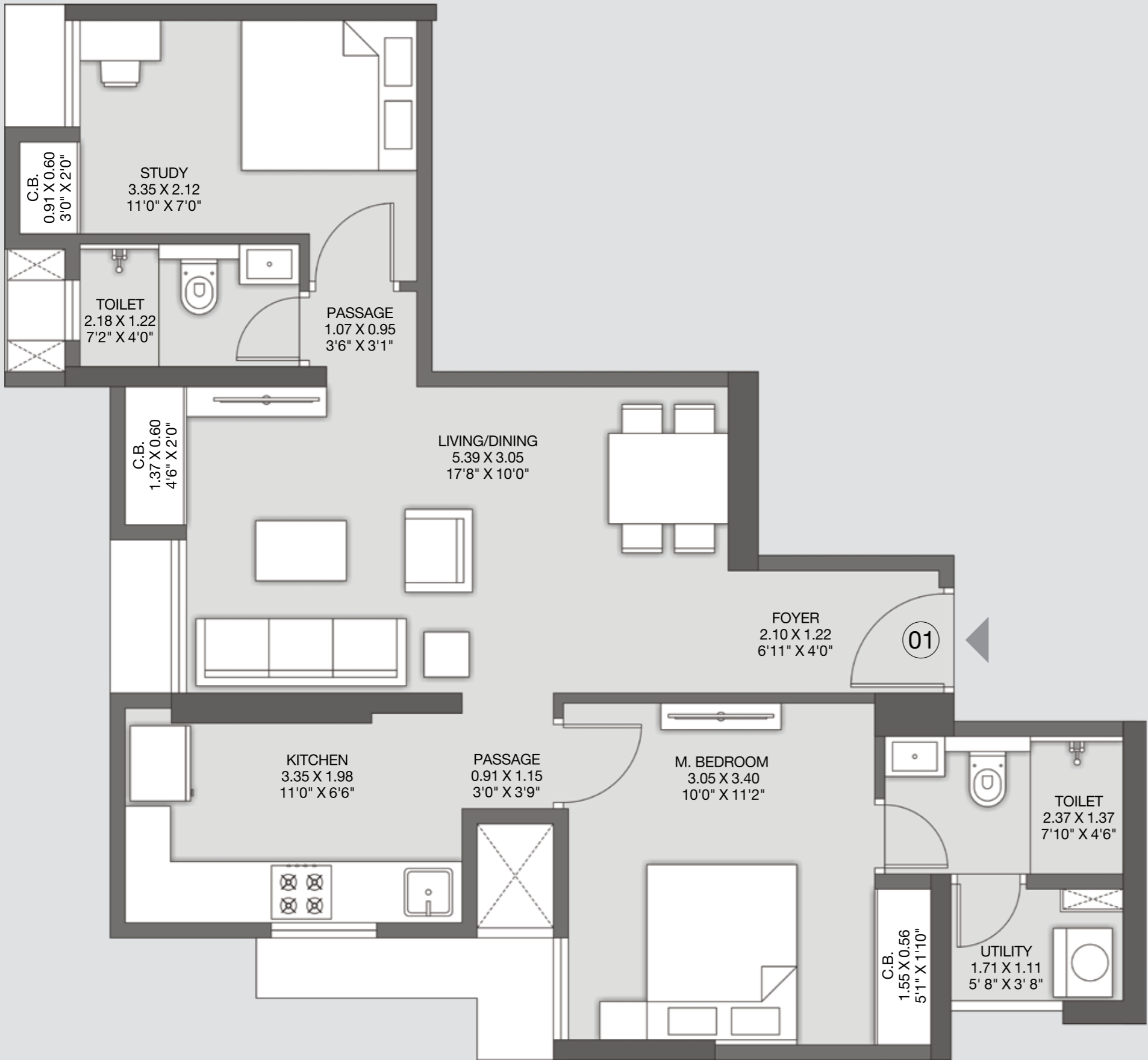


1 Sq. m. = 10.764 Sq. ft.

The furniture, decorative items, etc. shown in the plan are only suggested and the same are not intended or obligated to be provided as per specifications and/or service in the flat/unit and does not form part of the standard specifications. The plan represents unit series 2 of Tower/Wing 1 to 3

# GODREJ NIRVAAN THANE EXTENSION

## 2 PREMIUM



TOWER-1, 2, 3

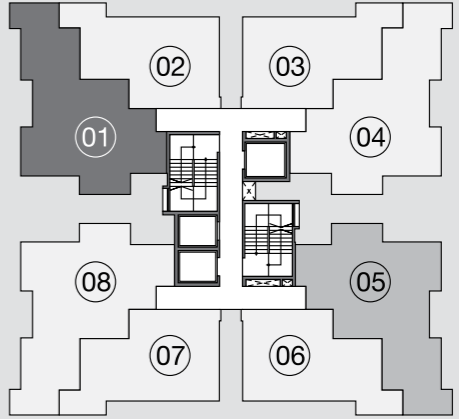
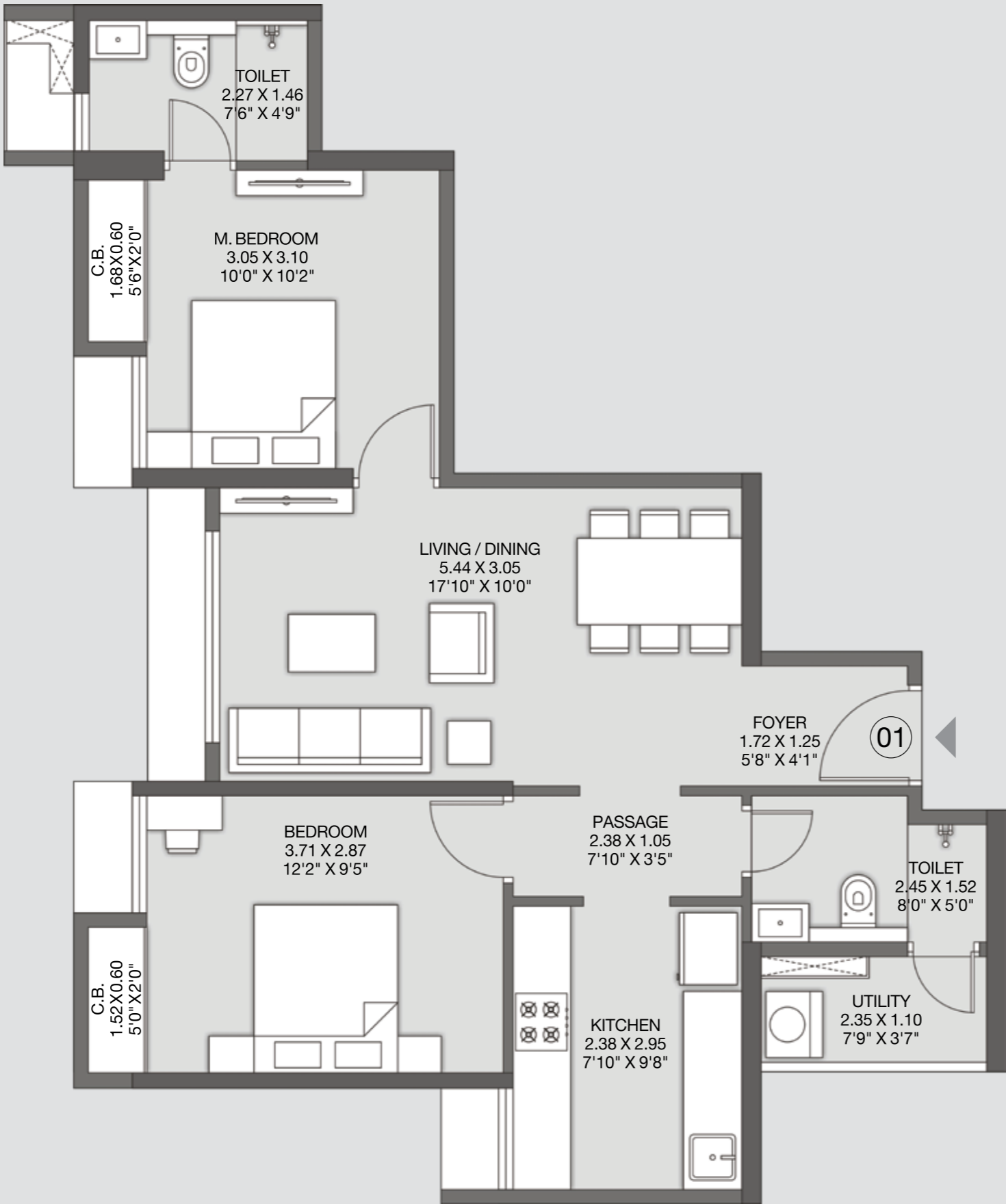


1 Sq. m. = 10.764 Sq. ft.

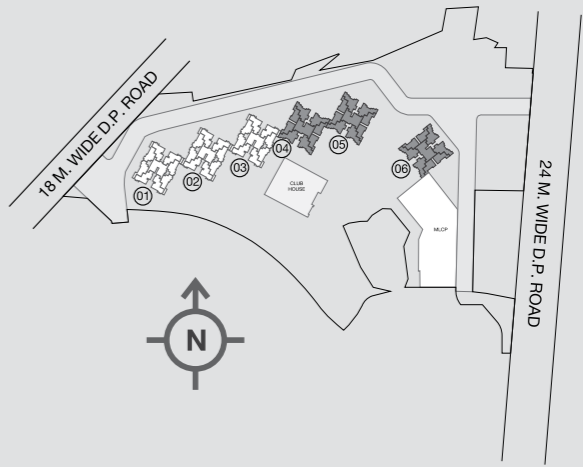
The furniture, decorative items, etc. shown in the plan are only suggested and the same are not intended or obligated to be provided as per specifications and/or service in the flat/unit and does not form part of the standard specifications. The plan represents unit series 1 of Tower/Wing 1 to 3

# GODREJ NIRVAAN THANE EXTENSION

**2 LUXE**



TOWER-4, 5, 6



1 Sq. m. = 10.764 Sq. ft.

The furniture, decorative items, etc. shown in the plan are only suggested and the same are not intended or obligated to be provided as per specifications and/or service in the flat/unit and does not form part of the standard specifications. The plan represents unit series 1 of Tower/Wing 4 to 9





---

The project is registered as Godrej Nirvaan under MahaRERA No. P51700022148 available at <http://maharera.mahaonline.gov.in>. The project is being developed by "Prakhhyat Dwellings LLP" in which Godrej Properties Limited is a partner.

The images shown are stock image/artist's impression and are for illustrative purposes only. The sale is subject to terms of the Application Form and the Agreement, including specification. Recipients are advised to apprise themselves of the necessary and relevant information of the project/offer prior to making any purchase decisions. The official website of Godrej Properties Ltd. is [www.godrejproperties.com](http://www.godrejproperties.com). Please do not rely on the information provided on any other website.