

TWO DECADES OF EXCELLENCE

Godrej Properties brings the Godrej Group philosophy of innovation, sustainability and excellence to the real estate industry. Each Godrej Properties development combines a 120 year legacy of excellence and trust with a commitment to cutting-edge design and technology. Godrej Properties is currently developing residential, commercial and township projects spread across approximately 14.36 million square meters (147 million square feet) in 12 cities.

In the last 3 years, Godrej Properties has received over 200 awards and recognitions, including the "Real Estate Company Of The Year" at the Construction Week India Awards 2015, 'Golden Peacock Award for Sustainability' for the year 2015 by Institute Of Directors (IOD), "Most Reliable Builder for 2014" at the CNBC AWAAZ Real Estate Awards 2014, "Innovation Leader in Real Estate" award at the NDTV Property Awards 2014 and "Popular Choice - Developer of the Year" award by ET NOW in 2013.



WOODS

GODREJ CITY, PANVEL



Site Office: Woods at Godrej City Ph-1, Off Old Mumbai Pune Highway, Khanawale, Panvel, Raigad - 410206

Godrej City Ph-1, Panvel MahaRERA Registration No.P5200001298 | Godrej Platinum, Vikhroli - MahaRERA Registration No. P51800013802 | Godrej Tranquil, Kandivali - MahaRERA Registration No.P5180000812
Godrej Emerald, Thane - MahaRERA Registration No. P51700000120 | Godrej Sky, Mumbai - MahaRERA Registration No. P51900003595 available at website: <http://maharera.mahaonline.gov.in>.

All images shown herein is an artist's impression indicating the anticipated appearance and no warranty is expressly or implicitly given that the completed development will comply with any degree with artist's impression as depicted. All specifications of the flat shall be as per the final agreement between the Parties. This is not an offer / an invitation to offer and / or commitment of any nature.

blank page

Introducing/ Unveiling/ Launching

99 Greenville Series

In Woods at Godrej City, Panvel







PANVEL - THE MEGAPOLIS OF OPPORTUNITY


Sion-Panvel Expressway, connection to the heart of Mumbai City

One-of-a-kind Connectivity

Vashi	29 mins*
Thane	58 mins*
South Mumbai	60 mins*
Pune	80 mins*

LEGENDS

-  National Highway
-  Expressway
-  Other Highway
-  Railway Connectivity
-  Proposed Metro Line
-  Mumbai Metro Line

-  Airport
-  Water Transport
-  Mall
-  Industry
-  School
-  Highway
-  Bridge
-  Hospital



WITHIN 10 MINS*

- St. Wilfred High School
- Wilfred College of Arts & Commerce
- Chhatrapati Shivaji Maharaj Institute of Technology
- Thombrewadi Bus stop
- Dhirubai Ambani Hospital
- Mohape railway station
- New Mumbai-Pune Expressway

WITHIN 25 MINS*

- Panvel Station
- Orion Mall
- K Mall / Big Bazaar
- Proposed Navi Mumbai International Airport
- DAV Public School
- St. Joseph High School
- Lifeline Hospital
- Patalganga MIDC

WITHIN 35 MINS*

- National Institute of Fashion Technology
- DY Patil Medical College
- DY Patil Stadium
- Ryan International School
- Delhi Public School
- Bharatiya Vidyapeeth College
- Apollo Hospital
- Central Park
- Talaja MIDC

*Google Maps, travel time under normal traffic condition. Map not to scale

¹Source: <https://mmrda.maharashtra.gov.in/mthl> ²Source: <http://www.mvcc.indianrailways.gov.in/works/uploads/File/Executive%20Summary%20CSTM%20PNVL%20FAST%20CORRIDOR.pdf>

³Source: <http://railanalysis.in/rail-news/detailed-project-report-dpr-metro-corridor-chhatrapati-shivaji-airport-terminus-santa-cruz-airport-navi-mumbai-international-airport-nmia-final-stages/> ⁴Source: http://www.cidco.maharashtra.gov.in/pdf/NAINA_website_new.pdf

PANVEL – THE CITY OF FUTURE

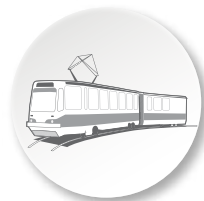


Navi Mumbai International Airport¹

- Second airport to be a key in boosting the economic activity & upgrading the location as the ultimate investment destination
- Financial closure announced for construction of the first phase of the airport on July 7, 2018

Airport Metro Corridor²

- Dedicated Metro service between the two international airports that will run round the clock
- Trains every 15 minutes & 5-6 stations to cover 40 km
- Reduces road connectivity by an hour



CSMT-Panvel Fast Corridor³

- A corridor of 11 stations to start from CSMT to run along the Harbour line to connect till Panvel
- To also intersect with the airport metro corridor

Mumbai Trans Harbour Link⁴

- India's longest sea link
- 22 km connecting Sewri to Nhava-Sheva
- To be ready by 2022



Sion-Panvel Expressway bridge⁵

- MSRDC to build 2 three-lane bridges along the Thane Creek bridge on the Expressway
- Expected to be completed by 2020

Navi Mumbai metro corridor⁶

- Being developed by CIDCO to establish better North-South and East-West connectivity
- First phase started in 2011 & is expected to be completed by May 2019



LIFE MADE SIMPLER AT GODREJ CITY



18-hole golf course designed by Frank Henegan



Godrej City Bus



Daily Convenience stores



Medical Center & Pharmacy store



Retail & Commercial Centre



Barbeque Spots



ATM



Restaurant & Cafe



Urban Farming



School



Central Park & Themed Gardens



Mini theatre



Shopping Plazas



City level club house



Safety & Security



¹Source: <https://www.financialexpress.com/lifestyle/travel-tourism/financial-closure-for-phase-i-of-navi-mumbai-international-airport-project/1237068/>
²Source: <https://www.hindustantimes.com/mumbai-news/mumbai-s-airport-metro-will-have-a-train-every-15-minutes/story-Nh3JrKnUhM6jzPICvezoN.html>,
<http://www.dnaindia.com/mumbai/report-in-a-first-high-speed-metro-corridor-will-run-24x7-2572273>
³Source: <https://www.mid-day.com/articles/mumbai-cst-to-panvel-railway-corridor-set-to-be-one-of-a-kind-metro-hybrid/18794193>
⁴Source: <https://economictimes.indiatimes.com/news/economy/infrastructure/mumbai-trans-harbour-link-to-be-ready-by-2022-japanese-diplomat/articleshow/64949602.cms>
⁵Source: <https://www.mid-day.com/articles/national-news-new-three-lane-bridges-sion-panvel-highway-ease-traffic-thane-creek-2020-mumbai-news/18225192>
⁶ <https://themetrorailguy.com/navi-mumbai-metro-information-map-updates/>

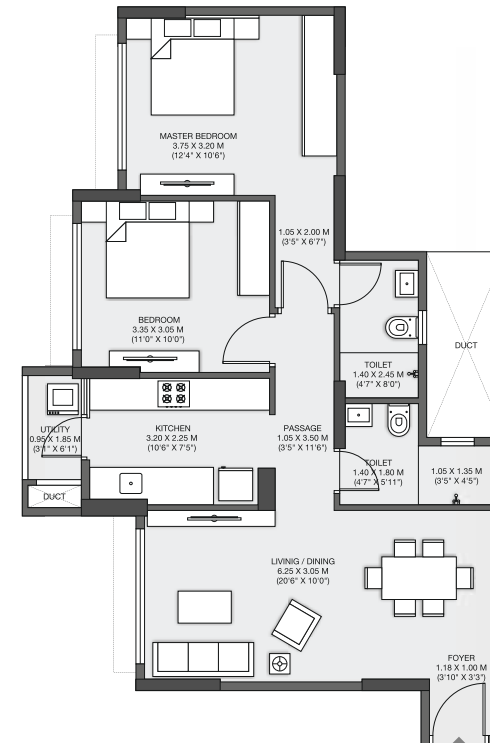
MASTER LAYOUT PLAN



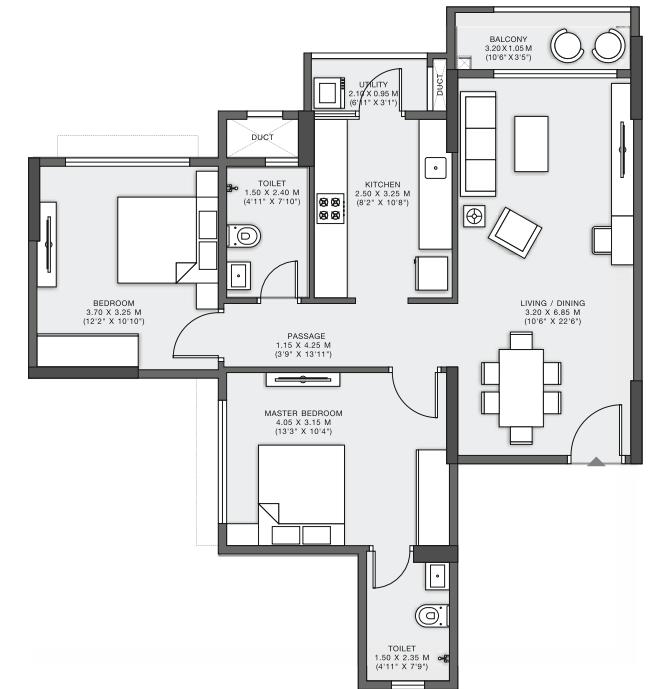
- | | |
|------------------------------------|---|
| 1. Daily Convenience Stores | 11. Central Greens |
| 2. Retail & Commercial Centre | 12. Senior Citizen Alcove With Acupressure Path |
| 3. Multi Purpose Sports Court | 13. Board Games Area |
| 4. Party Lawn | 14. Kids Play Area |
| 5. Outdoor Dining | 15. Feature Bridge |
| 6. Adults Lap Pool | 16. Amphitheatre |
| 7. Kids Pool | 17. Multi Level Club with Gym, Indoor Games Room, Spa & Multipurpose Hall |
| 8. Pool Deck With Pergolas | 18. Business Centre, Library & Mini Theatre |
| 9. Spiral Staircase with View Deck | 19. Outdoor Meditation Zone |
| 10. Barbeque Area | |

UNIT PLANS

2 BHK

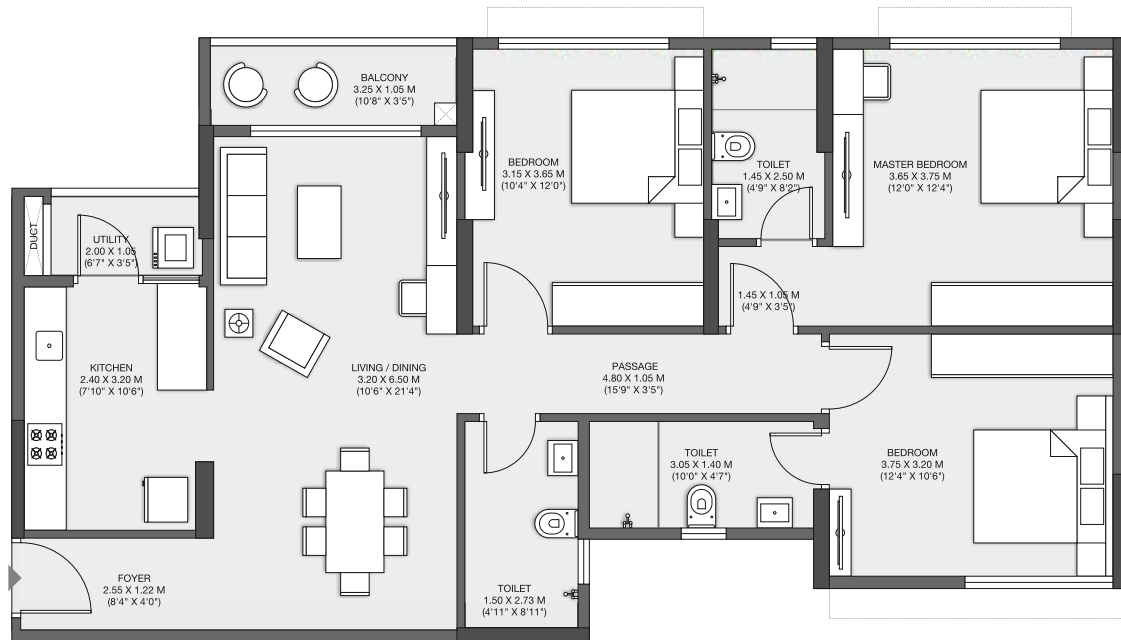


2 BHK SPACIOUS



UNIT PLANS

3 BHK



DISCOVER MORE - A CITY FOR EVERYONE

THE GREENVILLE EXPERIENCE

- Indulge in excellent views of the expanse of the central greens or golf course or hill views in your exclusive Greenville Decks
- Connect better to the life going on outside, while your kids indulge (change word) in the multipurpose sports court or the kids' lap pool
- Take a swing in the internationally designed 18-hole golf course by Frank Henegan

DISCOVER APPRECIATION - AN INVESTOR'S PARADISE

- The investment destination with several proposed infra developments to increase the value of the area in the coming years
- Price appreciation and rental demand owing to its proximity to various commercial, industrial & corporate complexes like Hindustan Organics Chemicals Ltd, Larsen & Toubro, ONGC, Reliance and Cipla
- Retail & Commercial building within Godrej City

DISCOVER CONVENIENCE - DAILY LIFE AT YOUR DOORSTEP

- Self-sufficient township with all daily needs within 5-10-15 mins distance
- School for your kids, retail store for your everyday needs and a medical centre to keep a check on your health
- Safety & security in a gated community
- Godrej City Bus to cater to your daily commute

BOOKING WINDOW OPEN			BIG BONANZA Booking Offer valid only for first 199 bookings
Type	RERA Carpet Area**	Agreement Value* 1st Floor (Lacs)	
2 BHK	67.26 sq.m.	₹ 76	
2 BHK SPACIOUS	75.78 sq.m.	₹ 86	
3 BHK	97.86 sq.m.	₹ 115	
Exclusive Booking Window opens on 18th Nov 2017			

*Agreement Value does not include PLC Charges, Floor Rise Charges, Other Charges, Stamp Duty Charges and Other Government Taxes
 #Source: http://www.cidco.maharashtra.gov.in/pdf/NAINA_website_new.pdf. **Rera Carpet area inclusive of appurtenant areas.