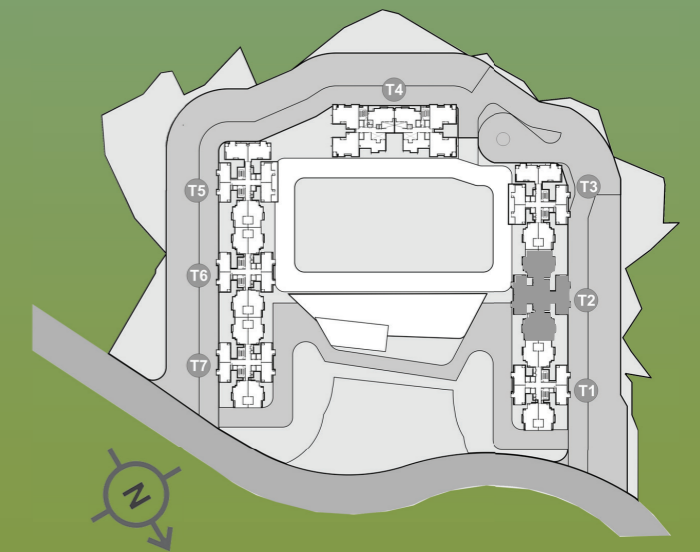


FLOOR PLANS

TOWER-2

THE HIGHLANDS GODREJ CITY, PANVEL

FIFTH FLOOR PLAN



The project is registered as The Highlands, Godrej City, Panvel with MahaRERA No. P52000026790 available at <http://maharera.mahaonline.gov.in>. This project is being developed by Caroa Properties LLP. The Project assets / Property is mortgaged to Axis Bank and No Objection Certificate (NOC) is required from Axis Bank for sale of flats / Property.

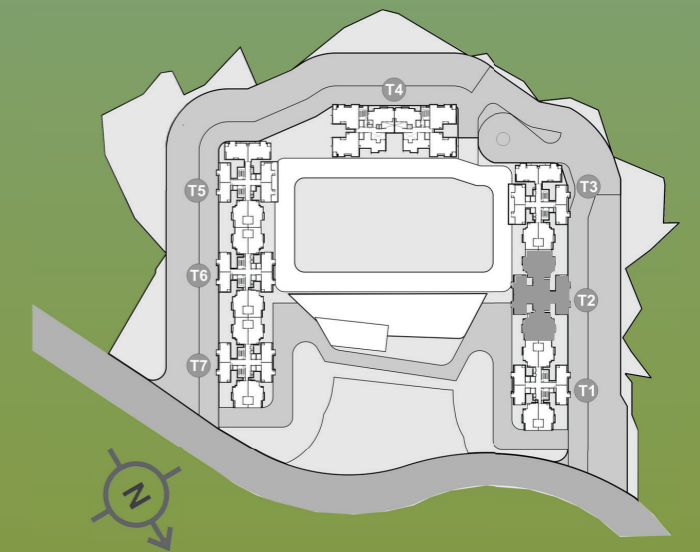
The furniture, decorative items, etc. shown in the plan are only suggested and the same are not intended or obligation to be provided as per specifications and/or service in the flat/unit and does not form part of the standard specifications, 1 Sq m = 10.764 Sq ft.s

TOWER-2

THE HIGHLANDS GODREJ CITY, PANVEL



SECOND FLOOR PLAN (PODIUM)

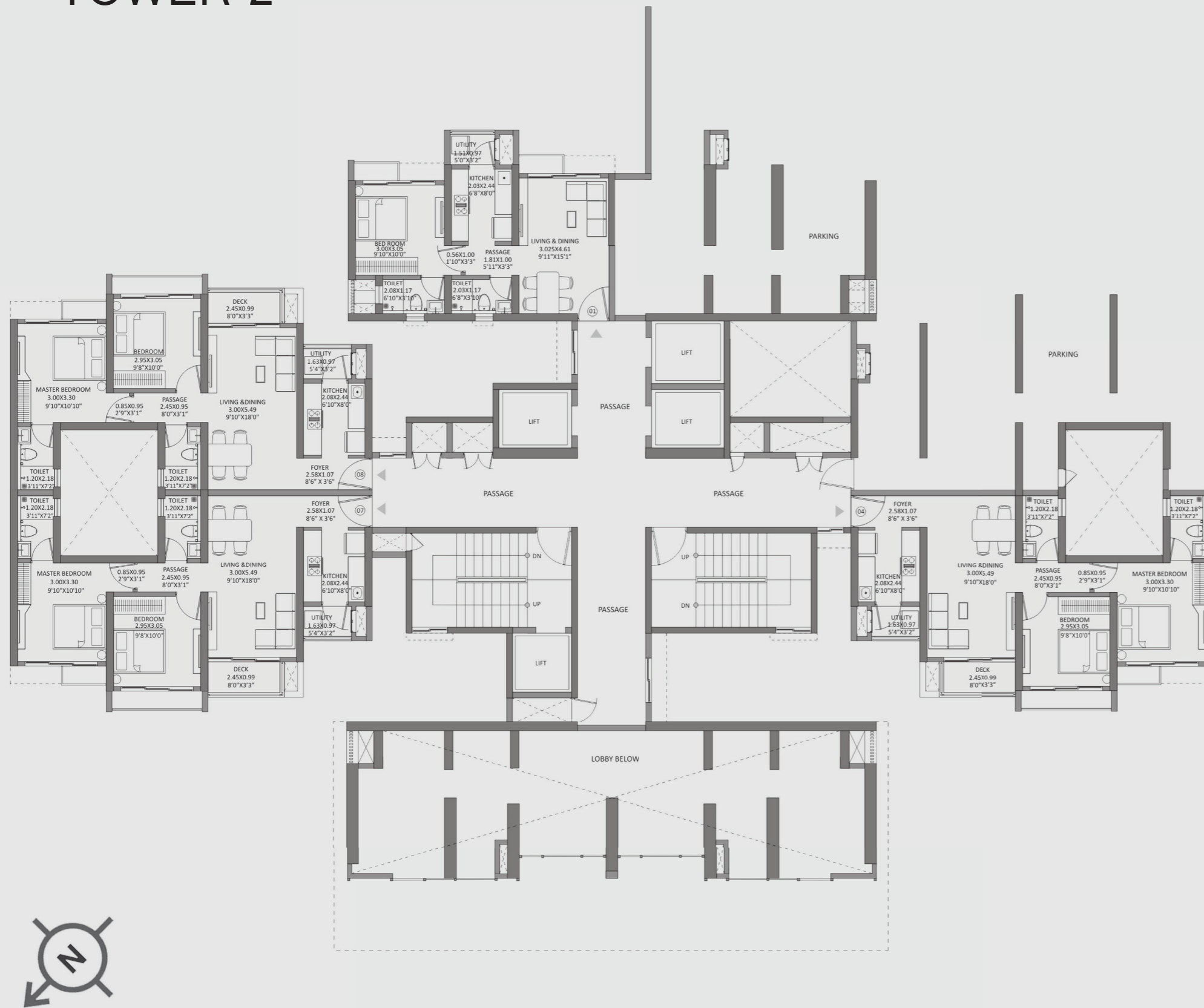


The project is registered as The Highlands, Godrej City, Panvel with MahaRERA No. P52000026790 available at <http://maharera.mahaonline.gov.in>. This project is being developed by Caroa Properties LLP. The Project assets / Property is mortgaged to Axis Bank and No Objection Certificate (NOC) is required from Axis Bank for sale of flats / Property.

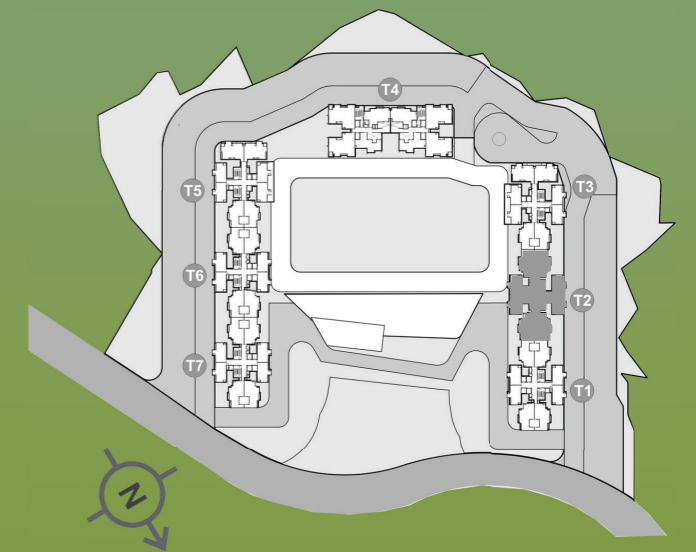
The furniture, decorative items, etc. shown in the plan are only suggested and the same are not intended or obligation to be provided as per specifications and/or service in the flat/unit and does not form part of the standard specifications, 1 Sq m = 10.764 Sq ft.s

TOWER-2

THE HIGHLANDS GODREJ CITY, PANVEL



THIRD FLOOR PLAN (PODIUM)

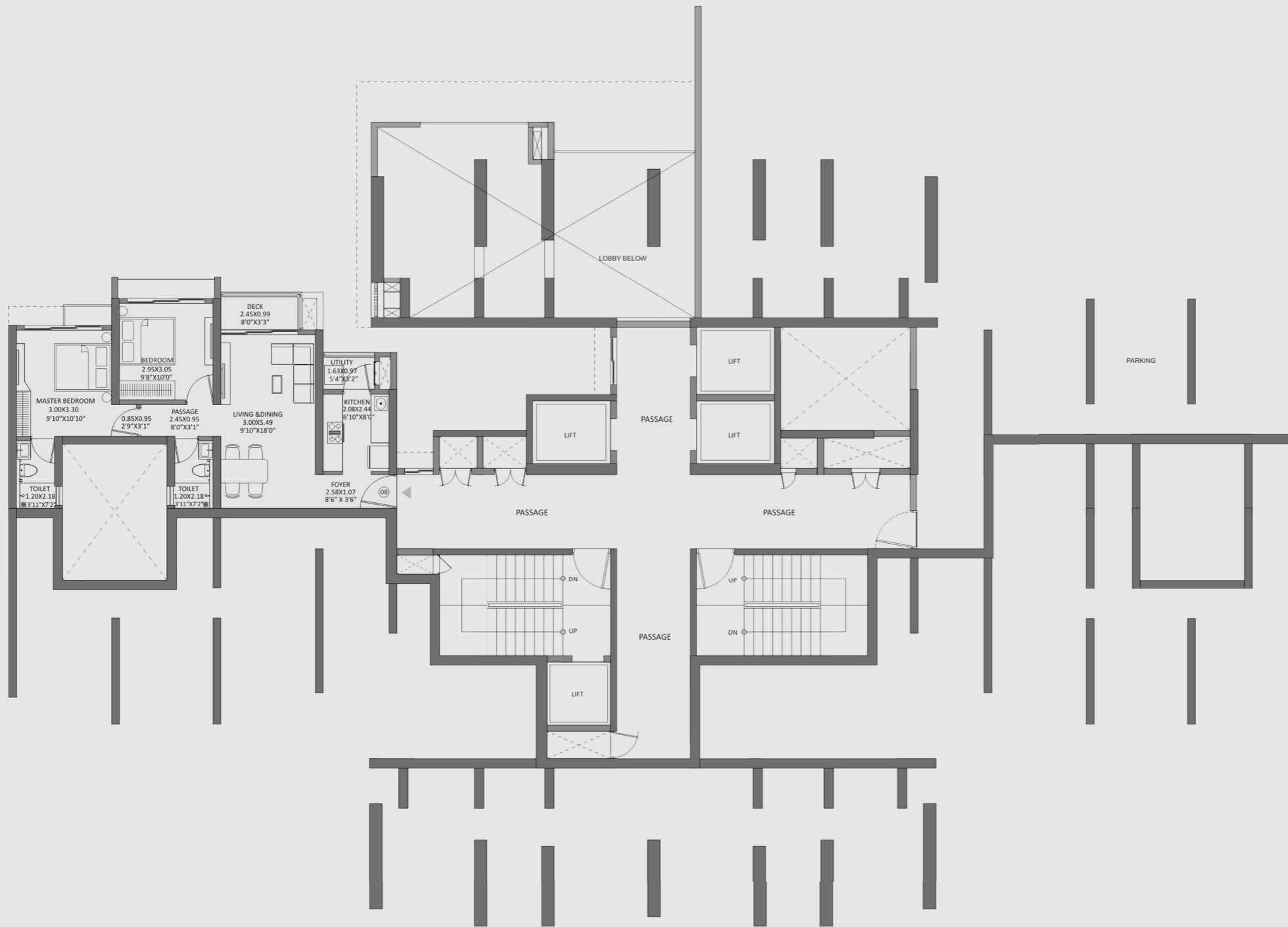


The project is registered as The Highlands, Godrej City, Panvel with MahaRERA No. P52000026790 available at <http://maharera.mahaonline.gov.in>. This project is being developed by Caroa Properties LLP. The Project assets / Property is mortgaged to Axis Bank and No Objection Certificate (NOC) is required from Axis Bank for sale of flats / Property.

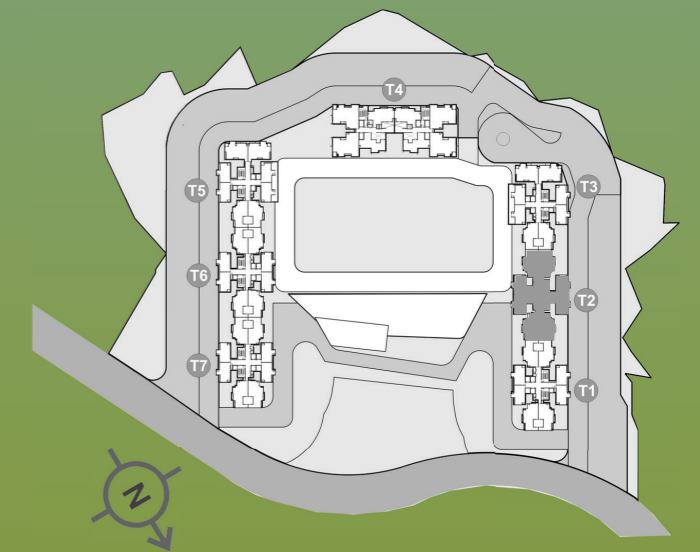
The furniture, decorative items, etc. shown in the plan are only suggested and the same are not intended or obligation to be provided as per specifications and/or service in the flat/unit and does not form part of the standard specifications, 1 Sq m = 10.764 Sq ft.s

TOWER-2

THE HIGHLANDS GODREJ CITY, PANVEL



FIRST FLOOR PLAN (PODIUM)



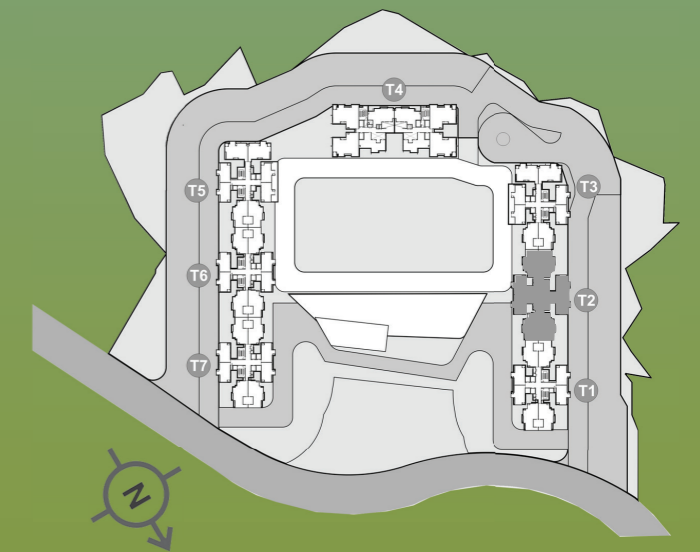
The project is registered as The Highlands, Godrej City, Panvel with MahaRERA No. P52000026790 available at <http://maharera.mahaonline.gov.in>. This project is being developed by Caroa Properties LLP. The Project assets / Property is mortgaged to Axis Bank and No Objection Certificate (NOC) is required from Axis Bank for sale of flats / Property.

The furniture, decorative items, etc. shown in the plan are only suggested and the same are not intended or obligation to be provided as per specifications and/or service in the flat/unit and does not form part of the standard specifications, 1 Sq m = 10.764 Sq ft.s

TOWER-2

THE HIGHLANDS GODREJ CITY, PANVEL

FOURTH FLOOR PLAN



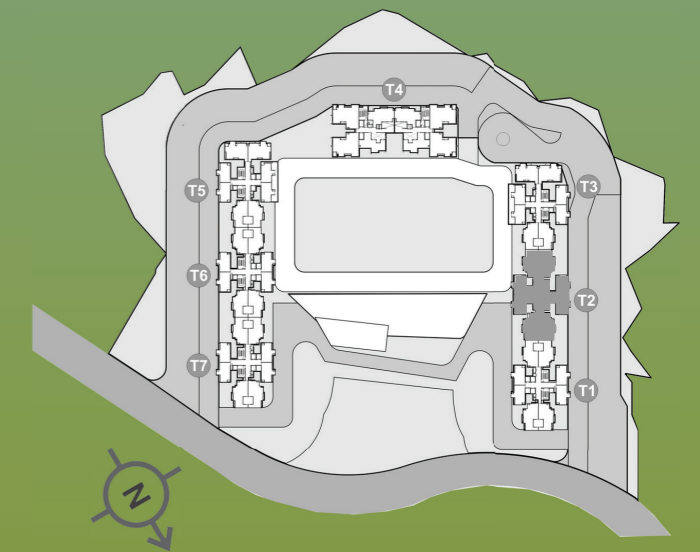
The project is registered as The Highlands, Godrej City, Panvel with MahaRERA No. P52000026790 available at <http://maharera.mahaonline.gov.in>. This project is being developed by Caroa Properties LLP. The Project assets / Property is mortgaged to Axis Bank and No Objection Certificate (NOC) is required from Axis Bank for sale of flats / Property.

The furniture, decorative items, etc. shown in the plan are only suggested and the same are not intended or obligation to be provided as per specifications and/or service in the flat/unit and does not form part of the standard specifications, 1 Sq m = 10.764 Sq ft.s

TOWER-2

THE HIGHLANDS GODREJ CITY, PANVEL

SIXTH FLOOR PLAN

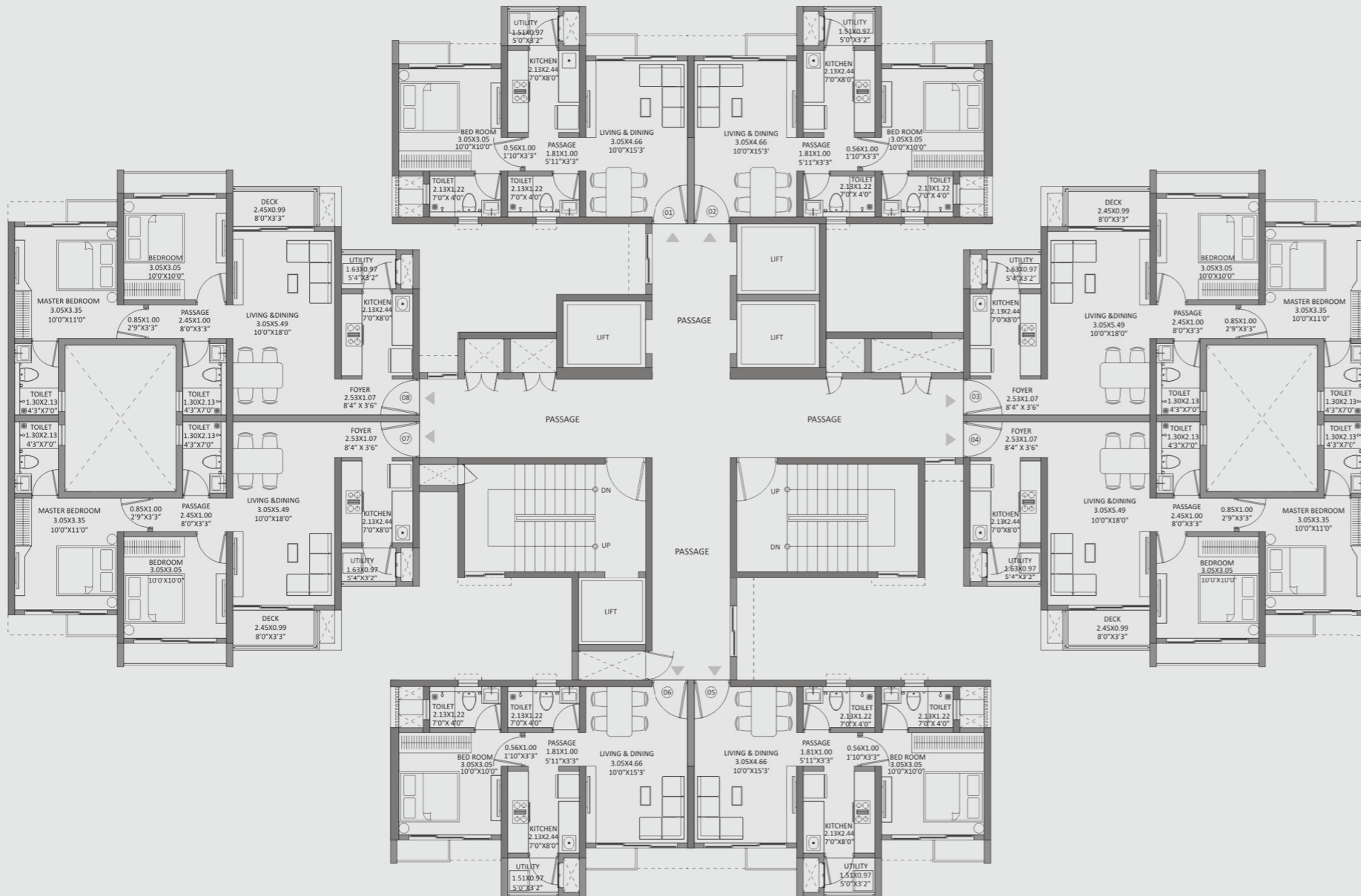


The project is registered as The Highlands, Godrej City, Panvel with MahaRERA No. P52000026790 available at <http://maharera.mahaonline.gov.in>. This project is being developed by Caroa Properties LLP. The Project assets / Property is mortgaged to Axis Bank and No Objection Certificate (NOC) is required from Axis Bank for sale of flats / Property.

The furniture, decorative items, etc. shown in the plan are only suggested and the same are not intended or obligation to be provided as per specifications and/or service in the flat/unit and does not form part of the standard specifications, 1 Sq m = 10.764 Sq ft.s

TOWER-2

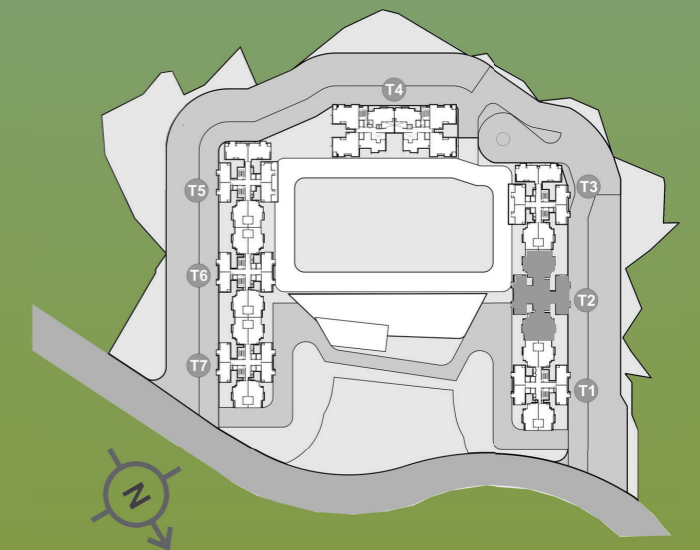
THE HIGHLANDS GODREJ CITY, PANVEL



TYPICAL FLOOR PLAN

FLOORS

8-11, 13-16, 18-21, 23-26,
28-31, 33-36, 38-39

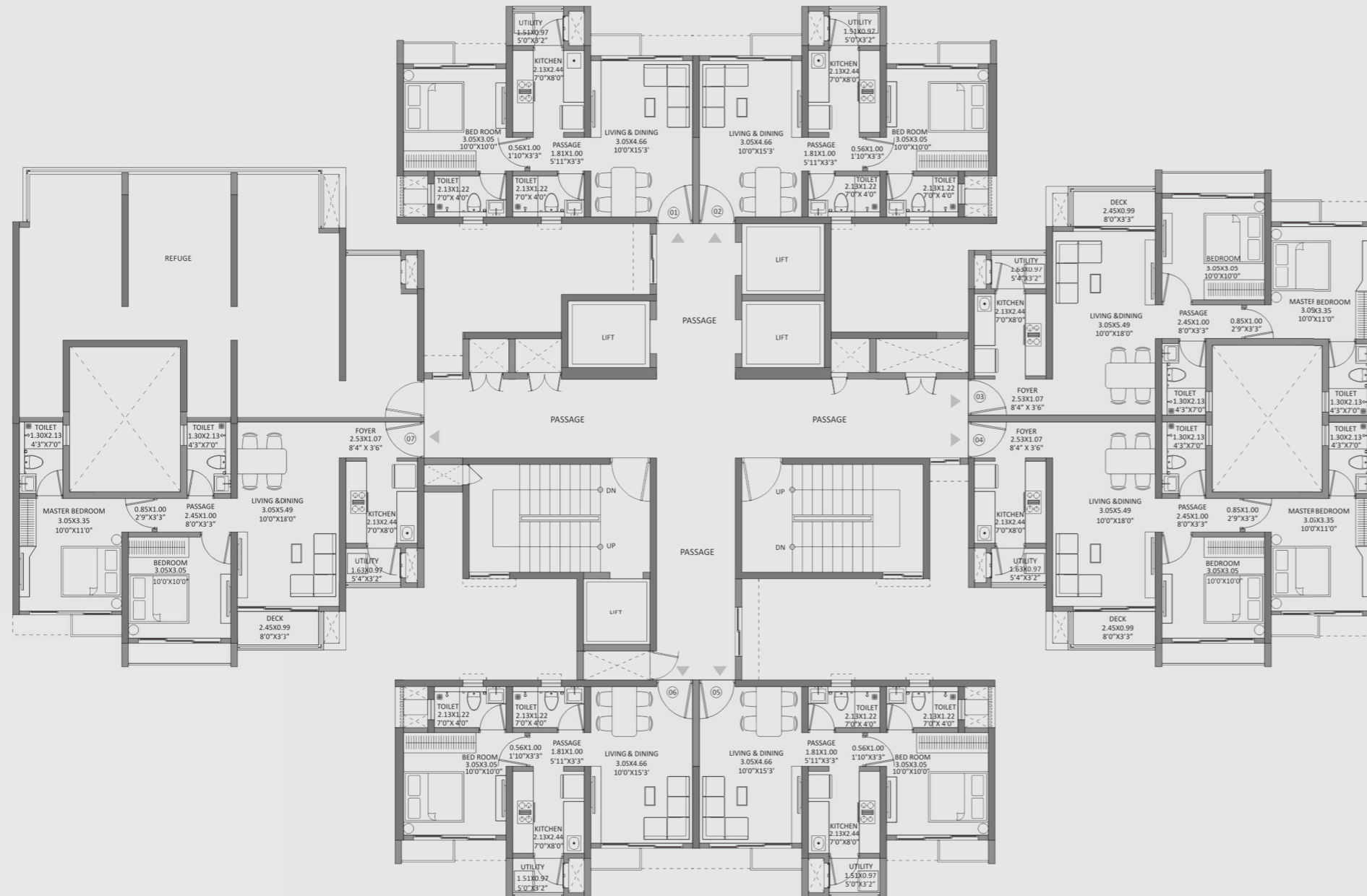


The project is registered as The Highlands, Godrej City, Panvel with MahaRERA No. P52000026790 available at <http://maharera.mahaonline.gov.in>. This project is being developed by Caroa Properties LLP. The Project assets / Property is mortgaged to Axis Bank and No Objection Certificate (NOC) is required from Axis Bank for sale of flats / Property.

The furniture, decorative items, etc. shown in the plan are only suggested and the same are not intended or obligation to be provided as per specifications and/or service in the flat/unit and does not form part of the standard specifications, 1 Sq m = 10.764 Sq ft.s

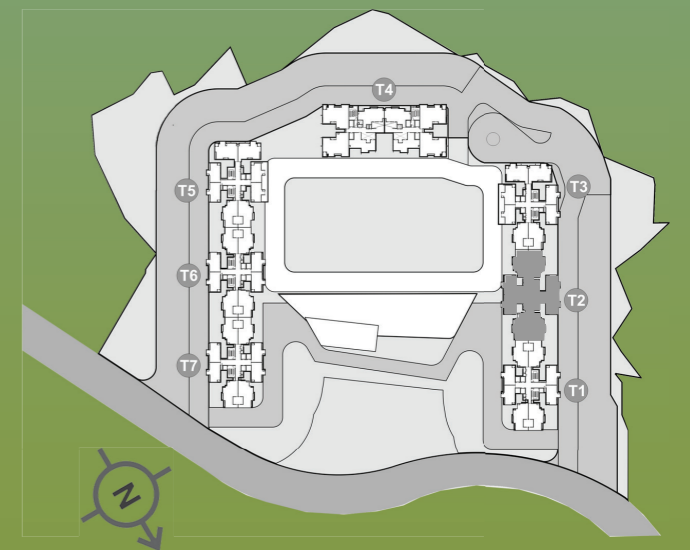
TOWER-2

THE HIGHLANDS GODREJ CITY, PANVEL



REFUGE FLOOR PLAN

FLOORS
7, 12, 17, 22, 27, 32, 37



The project is registered as The Highlands, Godrej City, Panvel with MahaRERA No. P52000026790 available at <http://maharera.mahaonline.gov.in>. This project is being developed by Caroa Properties LLP. The Project assets / Property is mortgaged to Axis Bank and No Objection Certificate (NOC) is required from Axis Bank for sale of flats / Property.

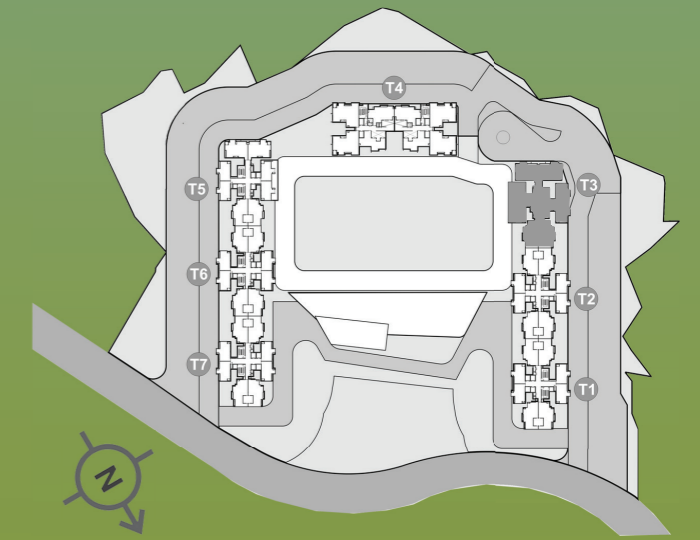
The furniture, decorative items, etc. shown in the plan are only suggested and the same are not intended or obligation to be provided as per specifications and/or service in the flat/unit and does not form part of the standard specifications, 1 Sq m = 10.764 Sq ft.s



TOWER-3

THE HIGHLANDS GODREJ CITY, PANVEL

FIRST FLOOR PLAN



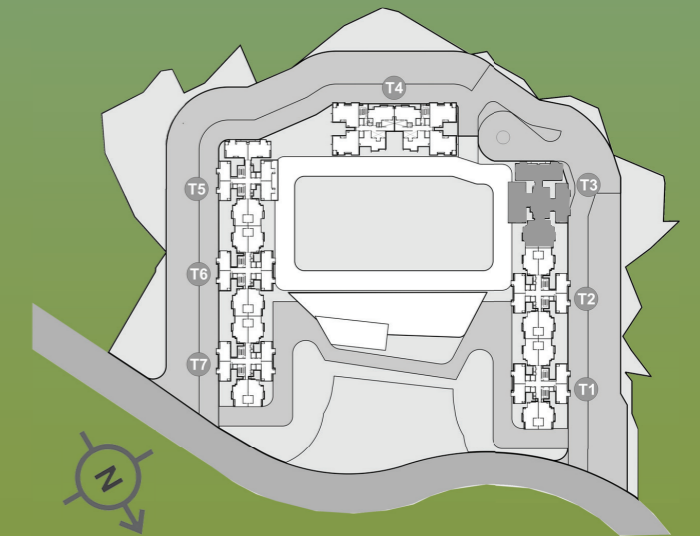
The project is registered as The Highlands, Godrej City, Panvel with MahaRERA No. P52000026790 available at <http://maharera.mahaonline.gov.in>. This project is being developed by Caroa Properties LLP. The Project assets / Property is mortgaged to Axis Bank and No Objection Certificate (NOC) is required from Axis Bank for sale of flats / Property.

The furniture, decorative items, etc. shown in the plan are only suggested and the same are not intended or obligation to be provided as per specifications and/or service in the flat/unit and does not form part of the standard specifications, 1 Sq m = 10.764 Sq ft.s

TOWER-3

THE HIGHLANDS GODREJ CITY, PANVEL

SECOND FLOOR PLAN



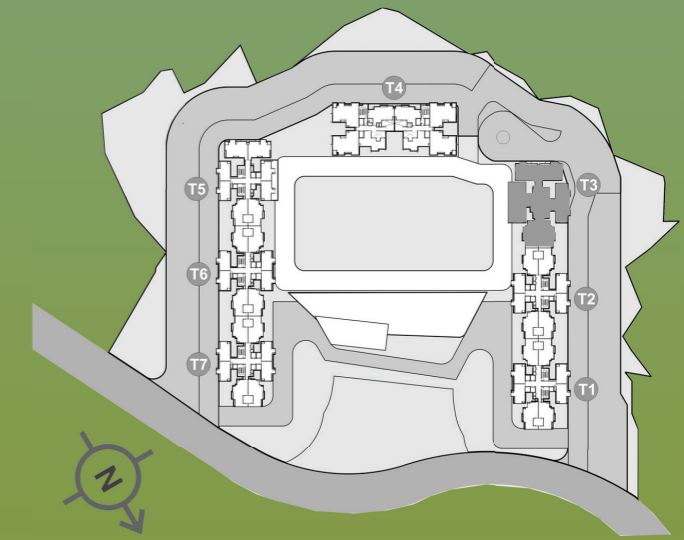
The project is registered as The Highlands, Godrej City, Panvel with MahaRERA No. P52000026790 available at <http://maharera.mahaonline.gov.in>. This project is being developed by Caroa Properties LLP. The Project assets / Property is mortgaged to Axis Bank and No Objection Certificate (NOC) is required from Axis Bank for sale of flats / Property.

The furniture, decorative items, etc. shown in the plan are only suggested and the same are not intended or obligation to be provided as per specifications and/or service in the flat/unit and does not form part of the standard specifications, 1 Sq m = 10.764 Sq ft.s

TOWER-3

THE HIGHLANDS GODREJ CITY, PANVEL

THIRD FLOOR PLAN



The project is registered as The Highlands, Godrej City, Panvel with MahaRERA No. P52000026790 available at <http://maharera.mahaonline.gov.in>. This project is being developed by Caroa Properties LLP. The Project assets / Property is mortgaged to Axis Bank and No Objection Certificate (NOC) is required from Axis Bank for sale of flats / Property.

The furniture, decorative items, etc. shown in the plan are only suggested and the same are not intended or obligation to be provided as per specifications and/or service in the flat/unit and does not form part of the standard specifications, 1 Sq m = 10.764 Sq ft.s

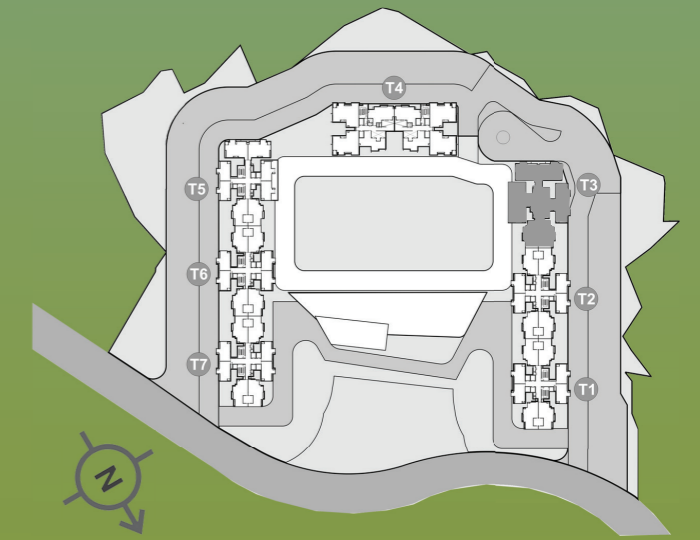
TOWER-3

THE HIGHLANDS GODREJ CITY, PANVEL



TYPICAL FLOOR PLAN

FLOORS
4-8, 10-13, 15-18, 20-23,
25-28, 30-33, 35-36



The project is registered as The Highlands, Godrej City, Panvel with MahaRERA No. P52000026790 available at <http://maharera.mahaonline.gov.in>. This project is being developed by Caroa Properties LLP. The Project assets / Property is mortgaged to Axis Bank and No Objection Certificate (NOC) is required from Axis Bank for sale of flats / Property.

The furniture, decorative items, etc. shown in the plan are only suggested and the same are not intended or obligation to be provided as per specifications and/or service in the flat/unit and does not form part of the standard specifications, 1 Sq m = 10.764 Sq ft.s

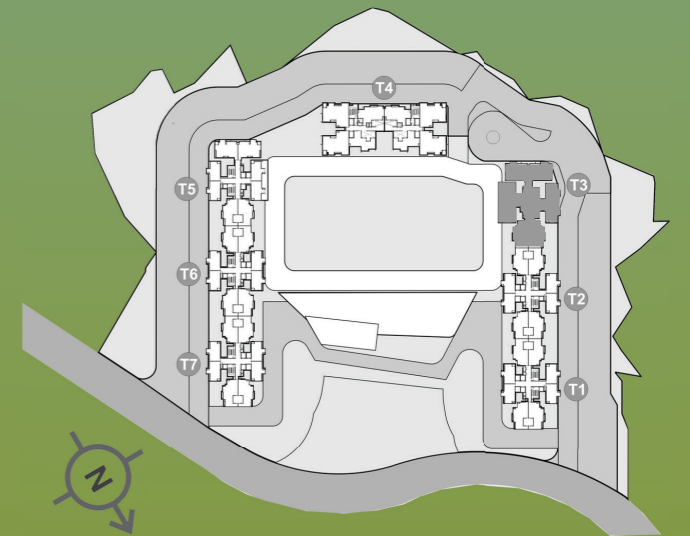
TOWER-3

THE HIGHLANDS GODREJ CITY, PANVEL



REFUGE FLOOR PLAN

FLOORS
9, 14, 19, 24, 29, 34

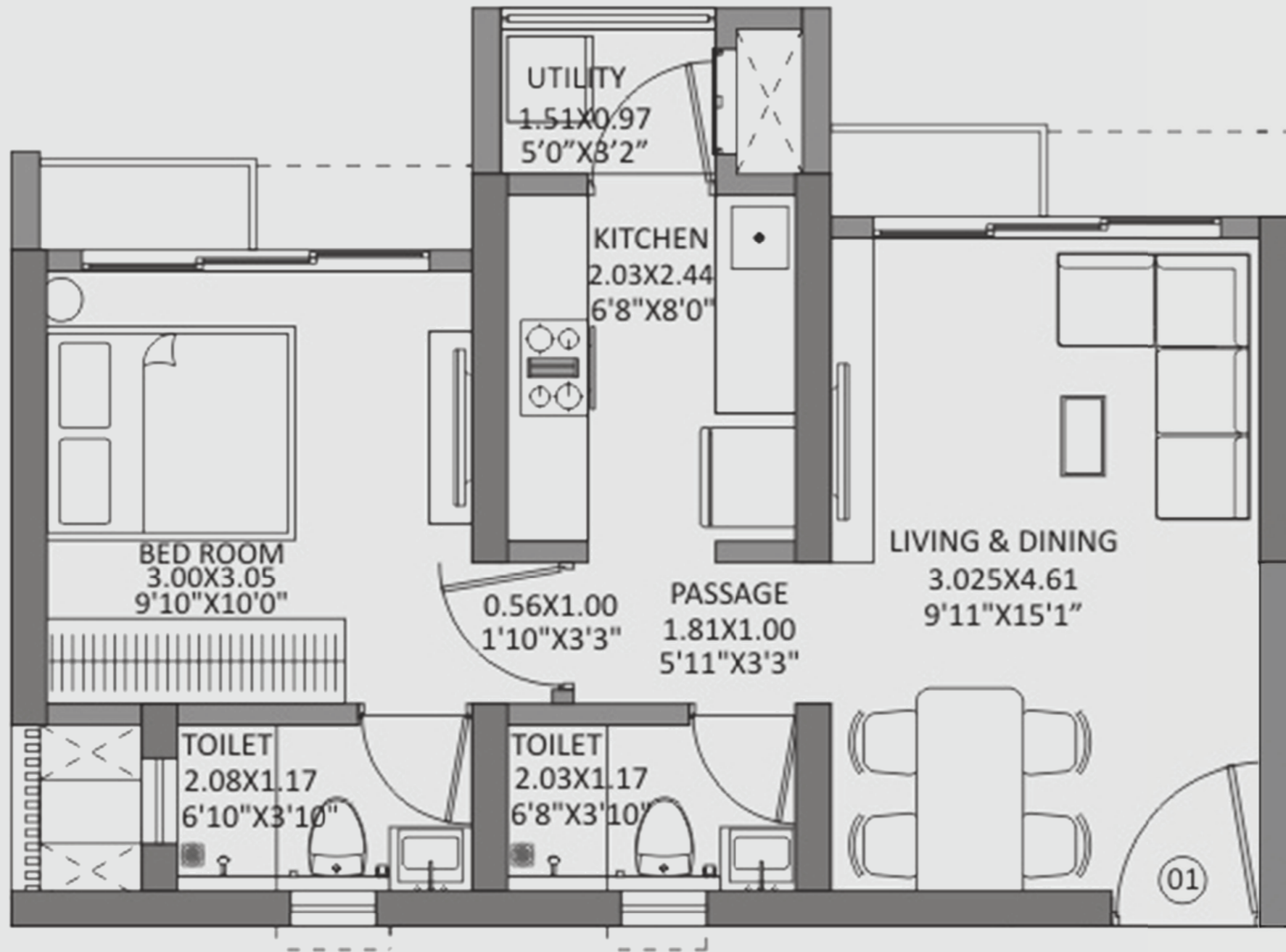


The project is registered as The Highlands, Godrej City, Panvel with MahaRERA No. P52000026790 available at <http://maharera.mahaonline.gov.in>. This project is being developed by Caroa Properties LLP. The Project assets / Property is mortgaged to Axis Bank and No Objection Certificate (NOC) is required from Axis Bank for sale of flats / Property.

The furniture, decorative items, etc. shown in the plan are only suggested and the same are not intended or obligation to be provided as per specifications and/or service in the flat/unit and does not form part of the standard specifications, 1 Sq m = 10.764 Sq ft.s

UNIT PLANS

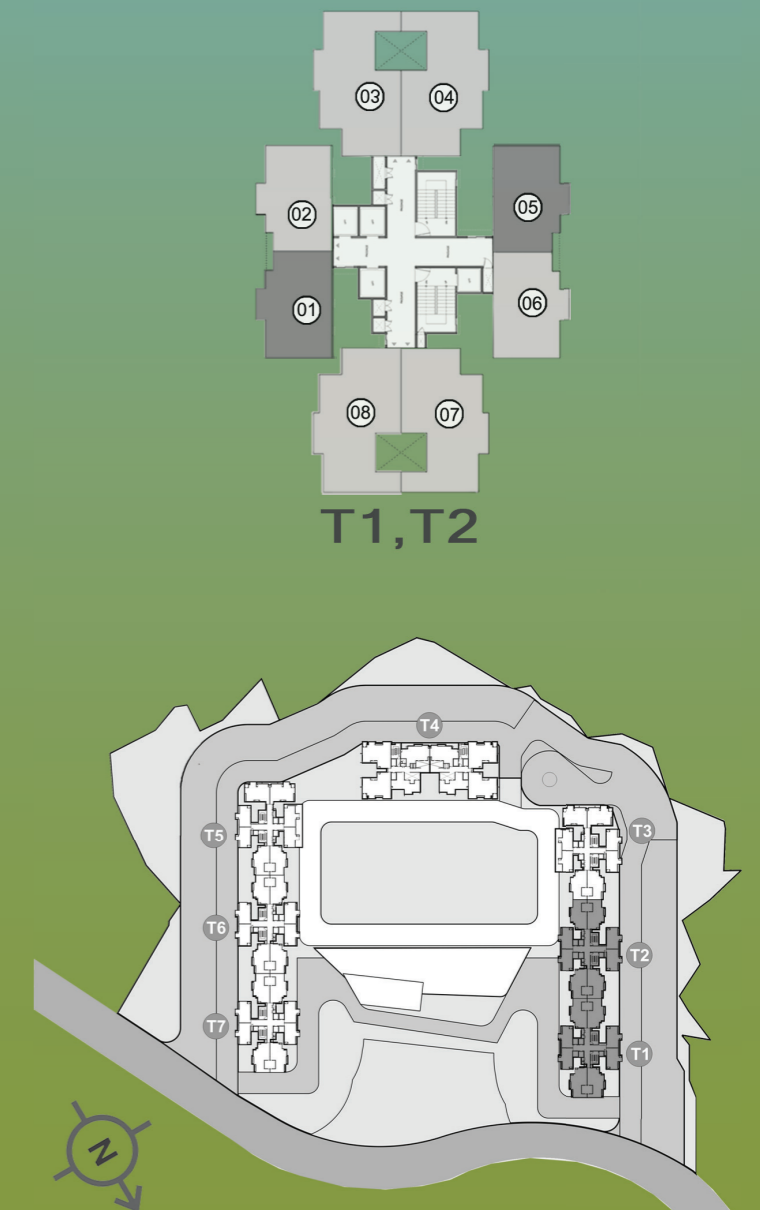
1 BHK



THE HIGHLANDS

GODREJ CITY, PANVEL

PODIUM FLOOR PLAN



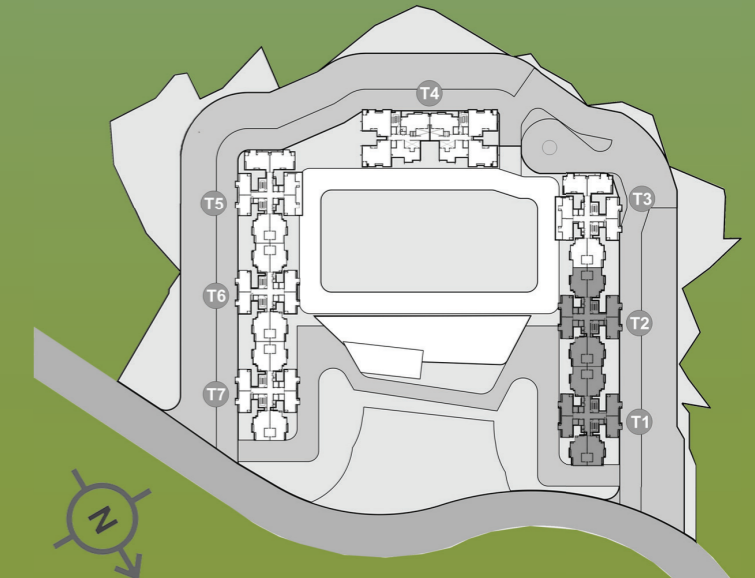
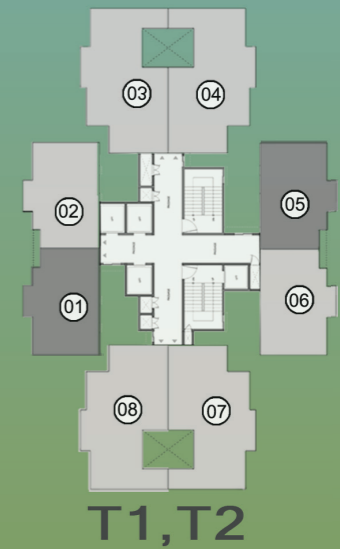
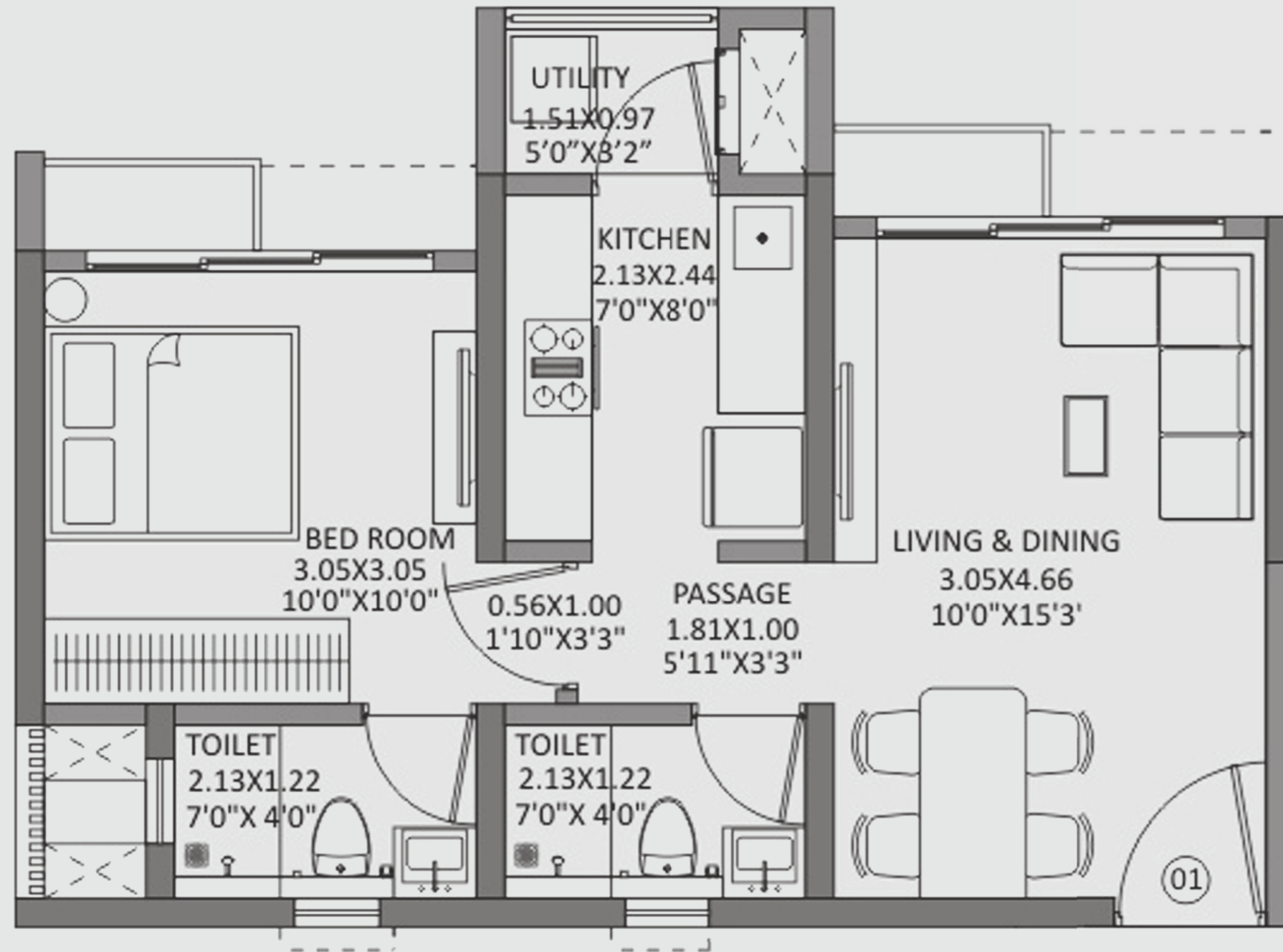
The project is registered as The Highlands, Godrej City, Panvel with MahaRERA No. P52000026790 available at <http://maharera.mahaonline.gov.in>. This project is being developed by Caroa Properties LLP. The Project assets / Property is mortgaged to Axis Bank and No Objection Certificate (NOC) is required from Axis Bank for sale of flats / Property.

The furniture, decorative items, etc. shown in the plan are only suggested and the same are not intended or obligation to be provided as per specifications and/or service in the flat/unit and does not form part of the standard specifications. The Plan represents unit series 01 of Tower1 & Tower 2. 1 Sq m = 10.764 Sq ft.

1 BHK

THE HIGHLANDS GODREJ CITY, PANVEL

TYPICAL FLOOR PLAN



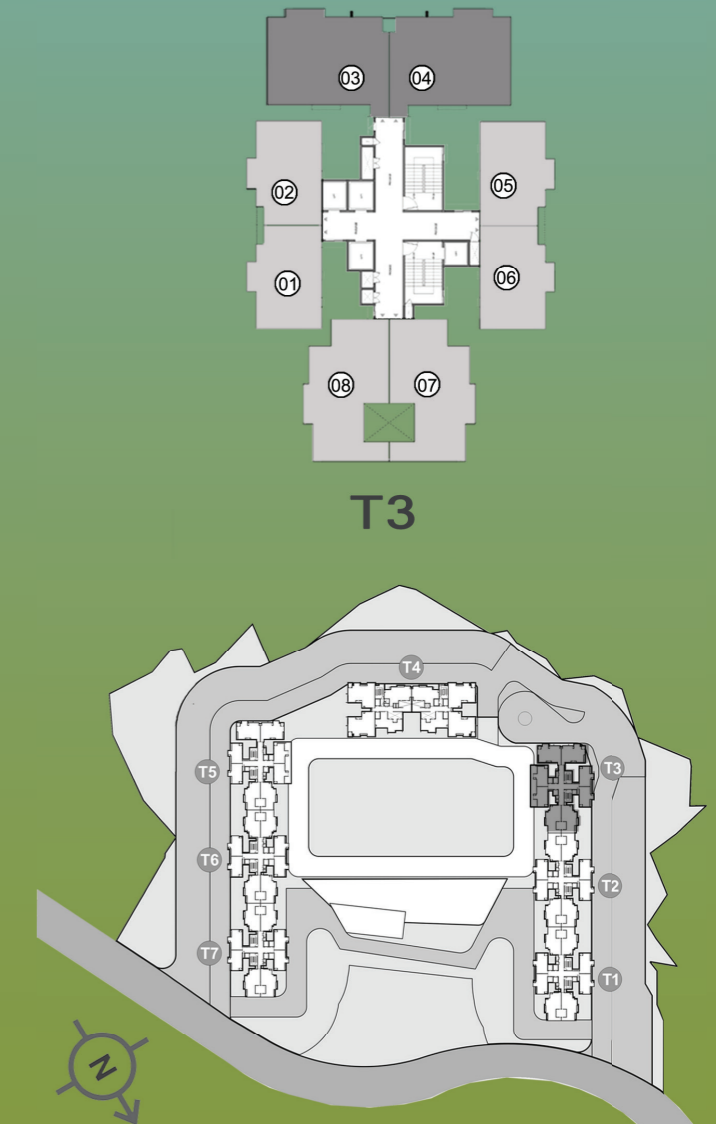
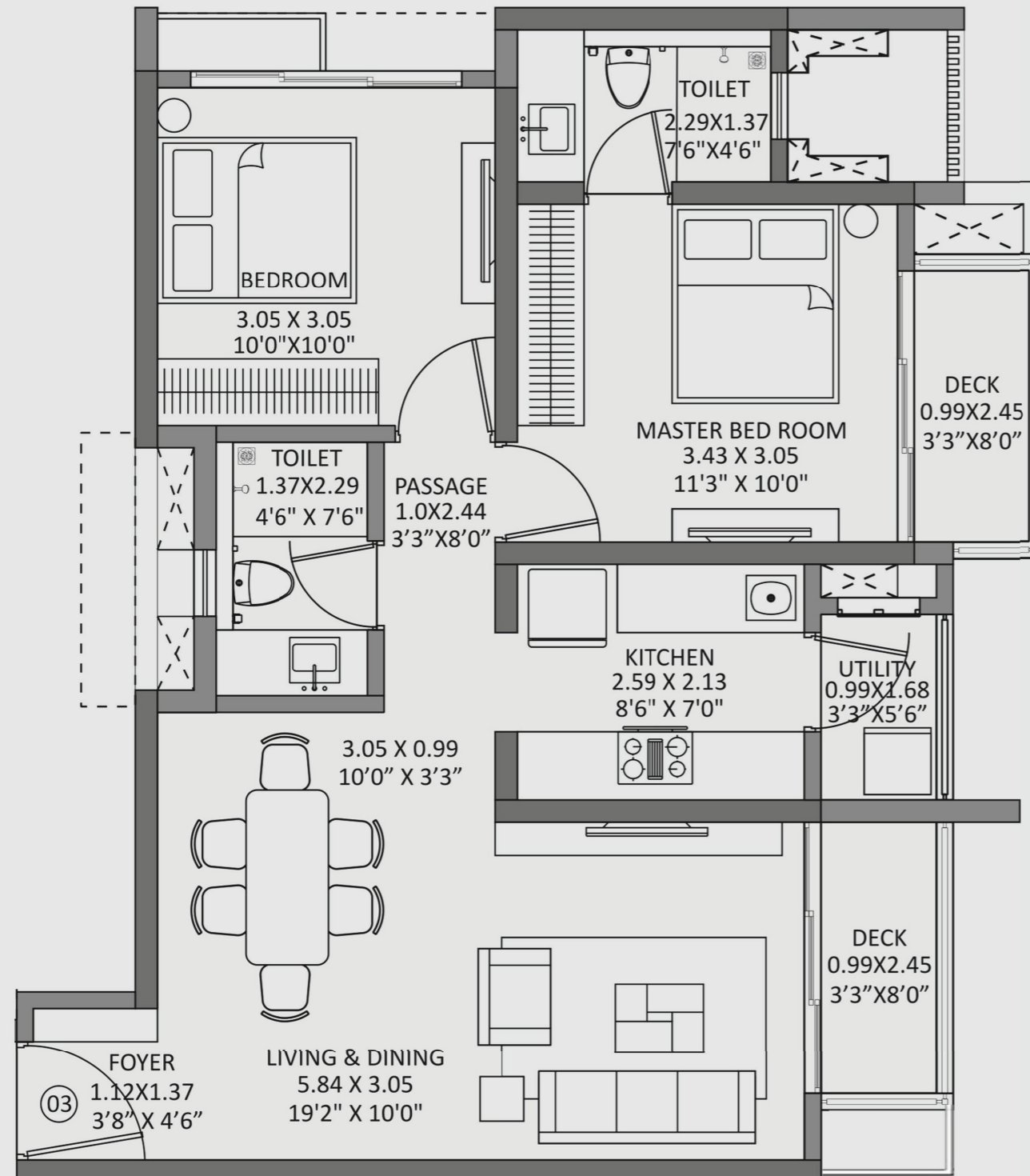
The project is registered as The Highlands, Godrej City, Panvel with MahaRERA No. P52000026790 available at <http://maharera.mahaonline.gov.in>. This project is being developed by Caroa Properties LLP. The Project assets / Property is mortgaged to Axis Bank and No Objection Certificate (NOC) is required from Axis Bank for sale of flats / Property.

The furniture, decorative items, etc. shown in the plan are only suggested and the same are not intended or obligation to be provided as per specifications and/or service in the flat/unit and does not form part of the standard specifications. The Plan represents unit series 01 of Tower1 & Tower 2. 1 Sq m = 10.764 Sq ft.

2 BHK LUXE

THE HIGHLANDS GODREJ CITY, PANVEL

TYPICAL FLOOR PLAN



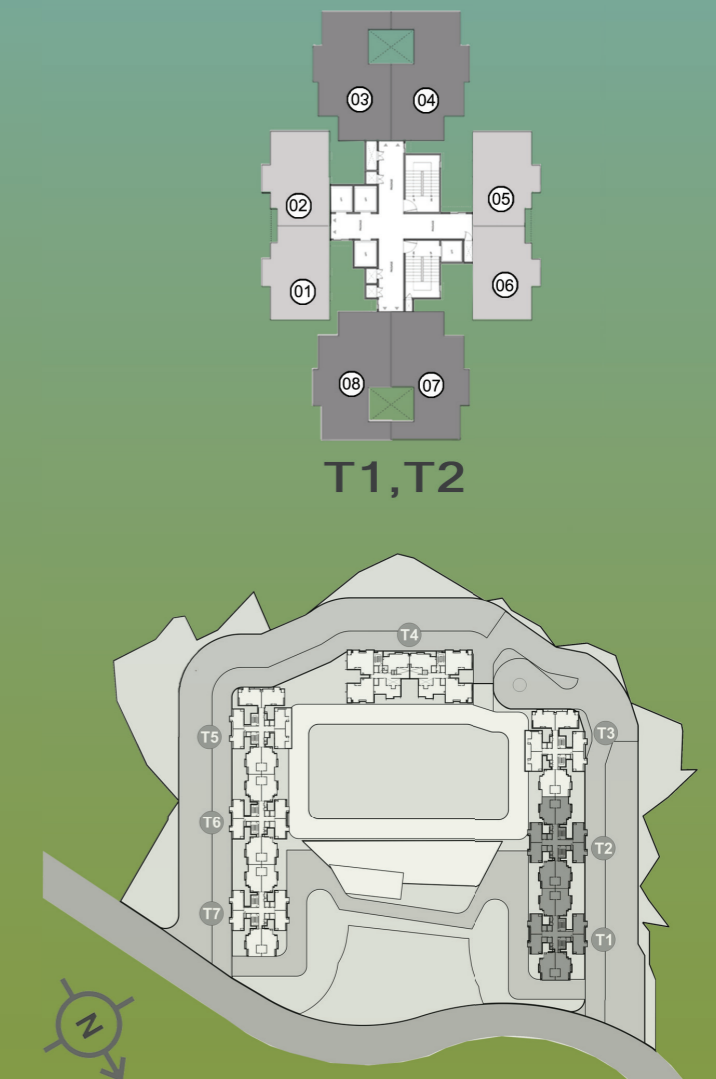
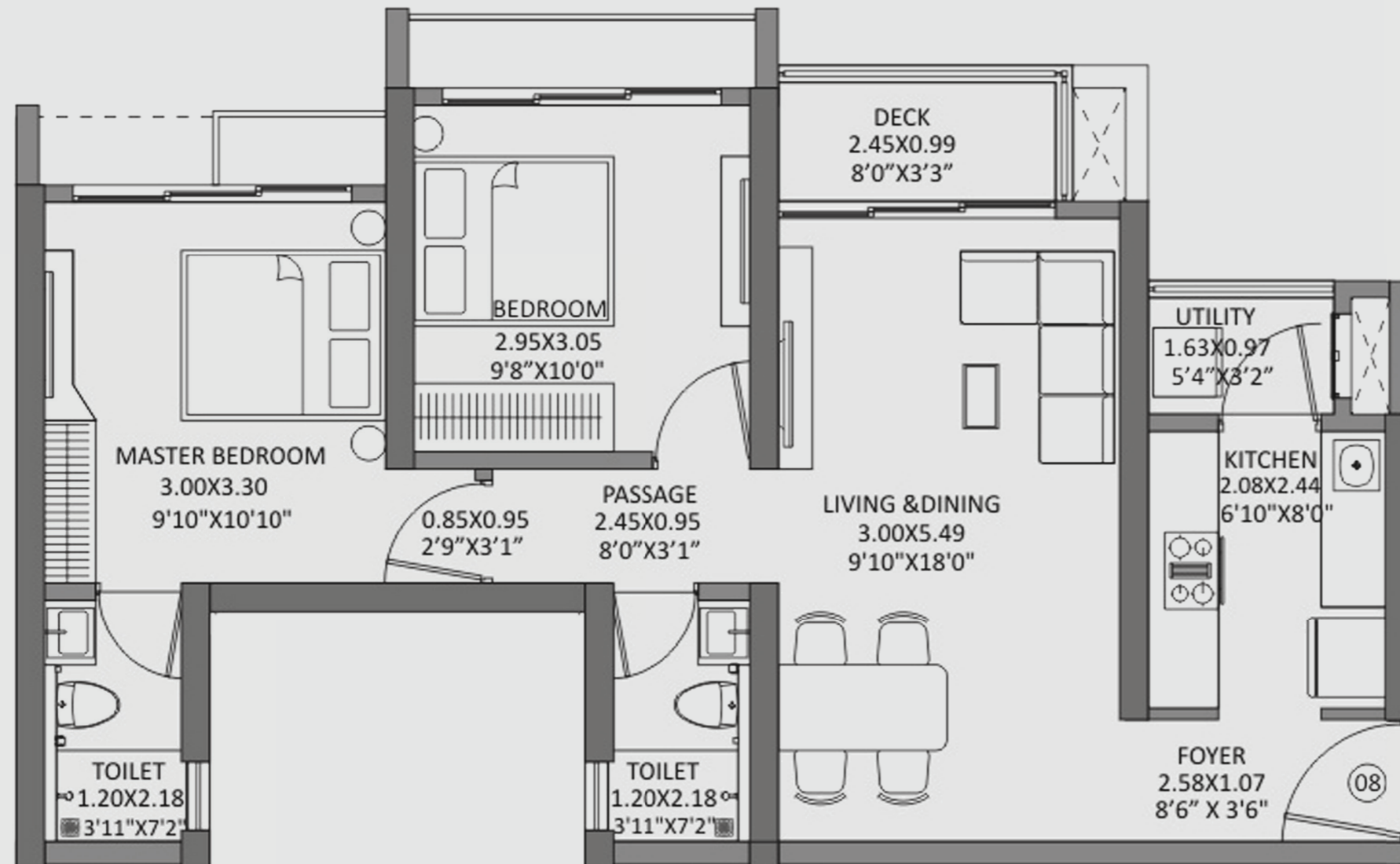
The project is registered as The Highlands, Godrej City, Panvel with MahaRERA No. P52000026790 available at <http://maharera.mahaonline.gov.in>. This project is being developed by Caroa Properties LLP. The Project assets / Property is mortgaged to Axis Bank and No Objection Certificate (NOC) is required from Axis Bank for sale of flats / Property.

The furniture, decorative items, etc. shown in the plan are only suggested and the same are not intended or obligation to be provided as per specifications and/or service in the flat/unit and does not form part of the standard specifications. The Plan represents unit series 01 of Tower 3. 1 Sq m = 10.764 Sq ft.

2 BHK PREMIUM

THE HIGHLANDS GODREJ CITY, PANVEL

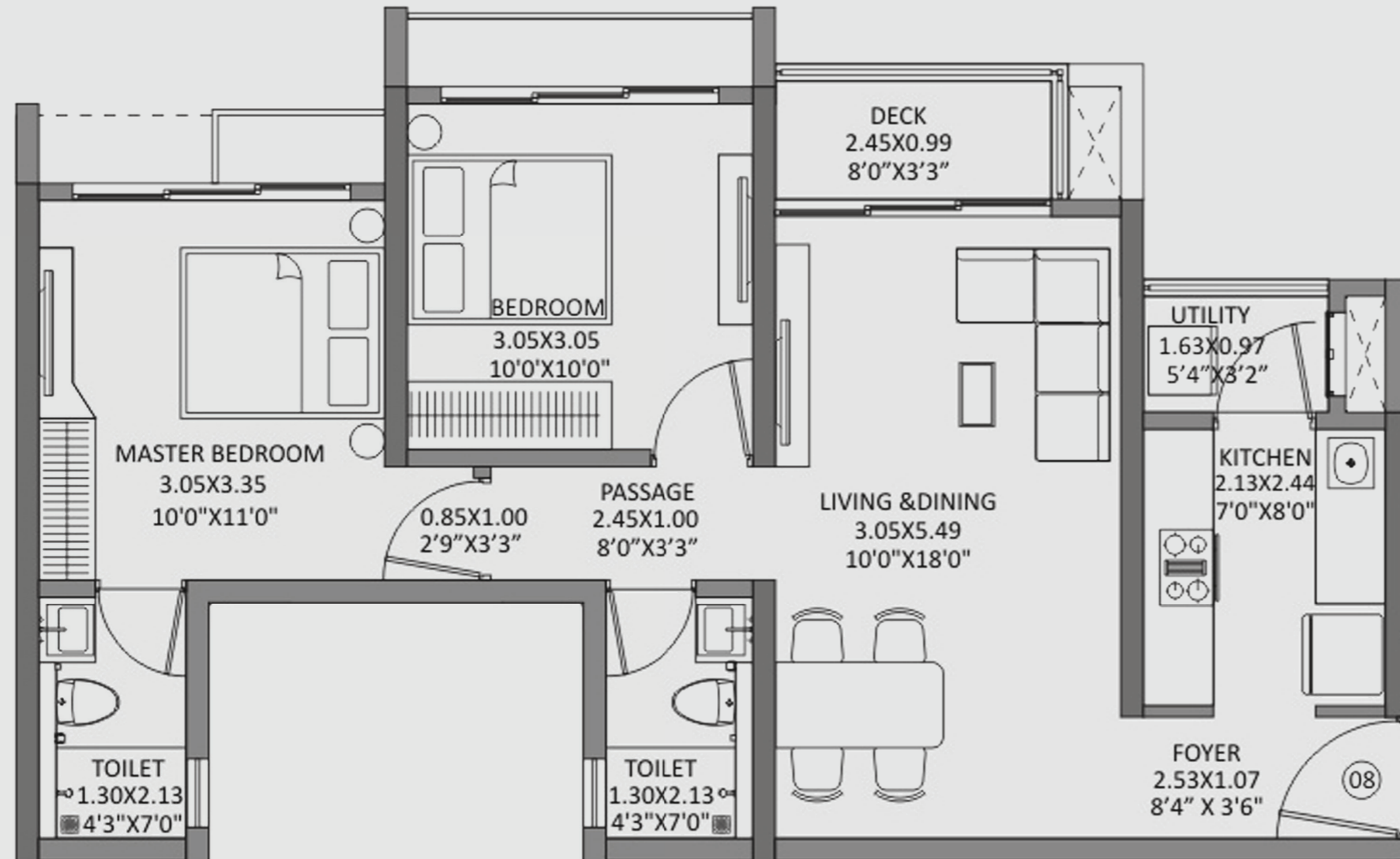
PODIUM FLOOR PLAN



The project is registered as The Highlands, Godrej City, Panvel with MahaRERA No. P52000026790 available at <http://maharera.mahaonline.gov.in>. This project is being developed by Caroa Properties LLP. The Project assets / Property is mortgaged to Axis Bank and No Objection Certificate (NOC) is required from Axis Bank for sale of flats / Property.

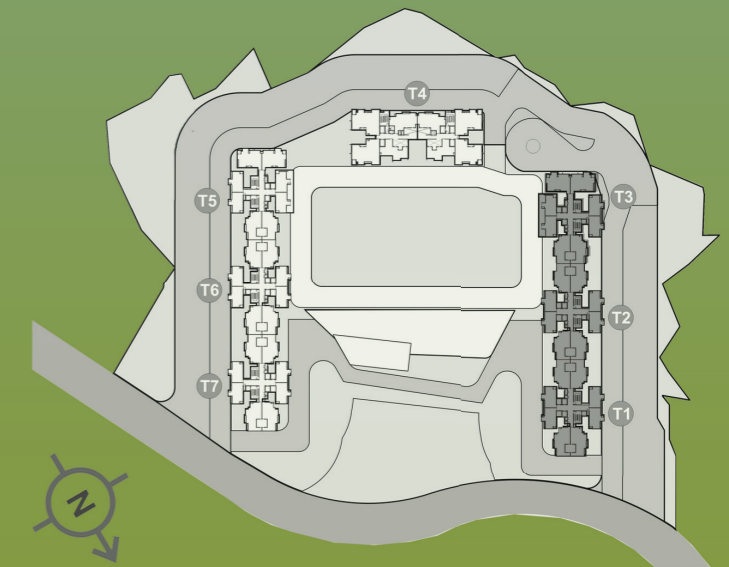
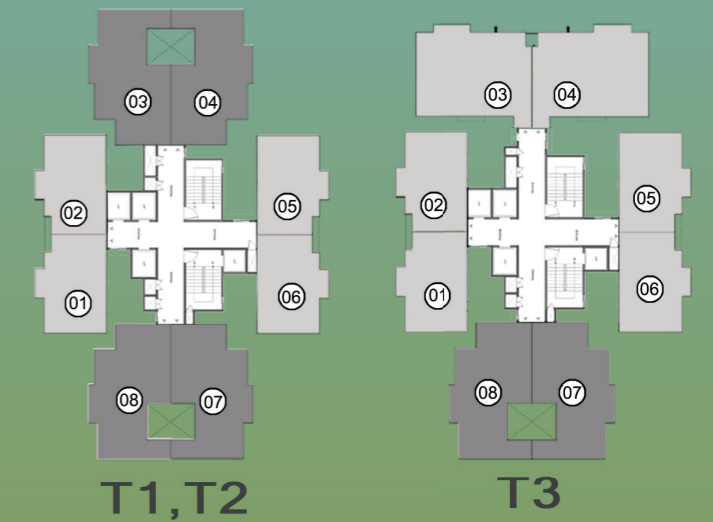
The furniture, decorative items, etc. shown in the plan are only suggested and the same are not intended or obligation to be provided as per specifications and/or service in the flat/unit and does not form part of the standard specifications. The Plan represents unit series 08 of Tower1 & Tower 2. 1 Sq m = 10.764 Sq ft.

2 BHK PREMIUM



THE HIGHLANDS GODREJ CITY, PANVEL

TYPICAL FLOOR PLAN



The project is registered as The Highlands, Godrej City, Panvel with MahaRERA No. P52000026790 available at <http://maharera.mahaonline.gov.in>. This project is being developed by Caroa Properties LLP. The Project assets / Property is mortgaged to Axis Bank and No Objection Certificate (NOC) is required from Axis Bank for sale of flats / Property.

The furniture, decorative items, etc. shown in the plan are only suggested and the same are not intended or obligation to be provided as per specifications and/or service in the flat/unit and does not form part of the standard specifications. The Plan represents unit series 08 of Tower1, Tower 2 & Tower 3. 1 Sq m = 10.764 Sq ft.