

KEYS TO SECURITY

IN PARTNERSHIP WITH



MahaRERA No. P51800022159 available at website: <http://maharera.mahaonline.gov.in>. The project is being developed by Shivam Megastructures Private Limited and Godrej Properties Limited is the Development Manager. The project is mortgaged to PNB Housing Finance Limited and Yes Bank Limited.

GODREJ NEST

KANDIVALI, MUMBAI



A Feeling So Secure











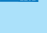

INTRODUCING A LIFE WITH A TRUE SENSE OF SECURITY

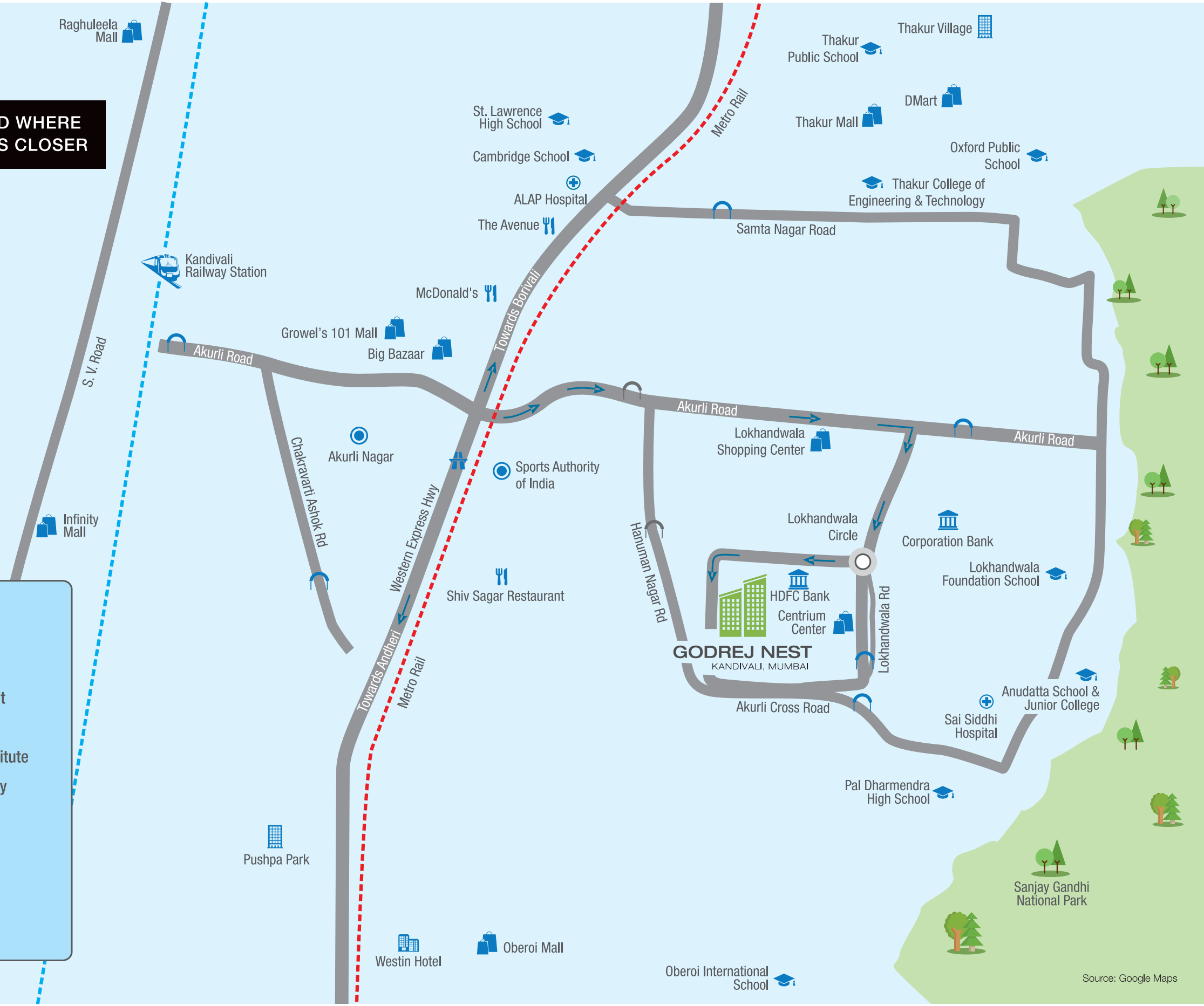
Imagine a home so secure, all your safety woes disappear. A feeling so secure, just like you would take care of your loved ones. A home that covers crucial aspects of safety and security, so you can always live a worry-free life.

Godrej Properties brings to you a home with a secure ecosystem for all. A home that gives you a 'feeling so secure'.



A NEIGHBOURHOOD WHERE THE WORLD COMES CLOSER

-  Landmark
-  Roadway
-  Commercial
-  Hotel/Restaurant
-  Hospital
-  Educational Institute
-  Express Highway
-  Mall
-  Bank
-  Railway Station
-  Hotel
-  Metro Rail



Source: Google Maps

CONNECT WITH LIFE AROUND GODREJ NEST

SCHOOLS & COLLEGES

| | |
|-------------------------------|---------------------|
| Lokhandwala Foundation School | 06 min [#] |
| Thakur Public School | 16 min [#] |
| Cambridge School | 18 min [#] |
| Oxford International School | 19 min [#] |
| Oberoi International School | 21 min [#] |

MALLS & THEATRES

| | |
|-----------------------------|---------------------|
| Lokhandwala Shopping Centre | 05 min [#] |
| Centrium Mall | 06 min [#] |
| Growels 101 | 17 min [#] |
| Oberoi Mall | 20 min [#] |

HOSPITALS

| | |
|------------------------------|---------------------|
| DNA Multispeciality Hospital | 06 min [#] |
| Shree Sai Hospital | 14 min [#] |
| ALAP Hospital | 15 min [#] |
| Sanjeevani Hospital | 21 min [#] |

BANKS

| | |
|-------|---------------------|
| HDFC | 04 min [#] |
| SBI | 05 min [#] |
| ICICI | 05 min [#] |



Source: Google Maps.
Travel time basis normal traffic conditions.

PRE-LAUNCHING

GODREJ NEST
KANDIVALI, MUMBAI

Godrej Properties brings forth Godrej Nest at Kandivali East. It offers an environment surrounded by features made for every member of the family so that you can live a carefree and secure life at all times.



**7 TIER SECURITY - SUPERIOR
ADVANCED FEATURES WHICH
ENSURE 24/7 SECURITY**

7 TIER SECURITY



PROJECT
LEVEL



PARKING
LEVEL



PODIUM LEVEL



AMENITY
LEVEL



TOWER
LEVEL



LOBBY LEVEL



APARTMENT
LEVEL

01 | PROJECT LEVEL

Your care starts as soon as you enter the project



Stock image for representation purpose only.

Right from the moment you enter the vicinity, we ensure that there is always someone to make you feel secure.



Project level features:

- RFID vehicular access
- 24x7 guard patrol

02 | PARKING LEVEL

Ensuring your safety throughout the premises.



Stock image for representation purpose only.

Round the clock security surveillance ensures safety of every member.



Parking level features:

- CCTV monitoring at parking level
- Relief button

03 | PODIUM LEVEL

Round the clock surveillance on the podium level.



The 24/7 security control room makes sure that you and your loved ones are always looked after and are safe.



Podium level features:

- Common security control room & 24 X 7 guard patrol
- CCTV monitoring
- Relief button

04 | AMENITY LEVEL

Let your children play freely, so you live worry-free.



We ensure the safety of your little ones at every corner of the project.



Amenity level features:

- RFID tracking/monitoring at swimming pool
- Relief button
- CCTV monitoring

05 | TOWER LEVEL

With an intercom system you can allow a person to access the tower, while you are secure at home.



While you are safe at every step in our project, you also have the power to ensure your security while sitting at home.



Tower level features:

- Numeric & voice control access
- Guard patrol in the lobby of every wing

06 | FLOOR/LOBBY LEVEL

Security at floor level while maintaining your safety at home.



Floor/Lobby level features:

- Video Door Phone
- Safety Double Door

07 | APARTMENT LEVEL

Your home offers the care and safety you need



Stock image for representation purpose only.

Ensuring the safety of your loved ones and your valuables even inside your home.



Apartment level features:

- Godrej Vault
- Relief Button



Stock image for representation purpose only.

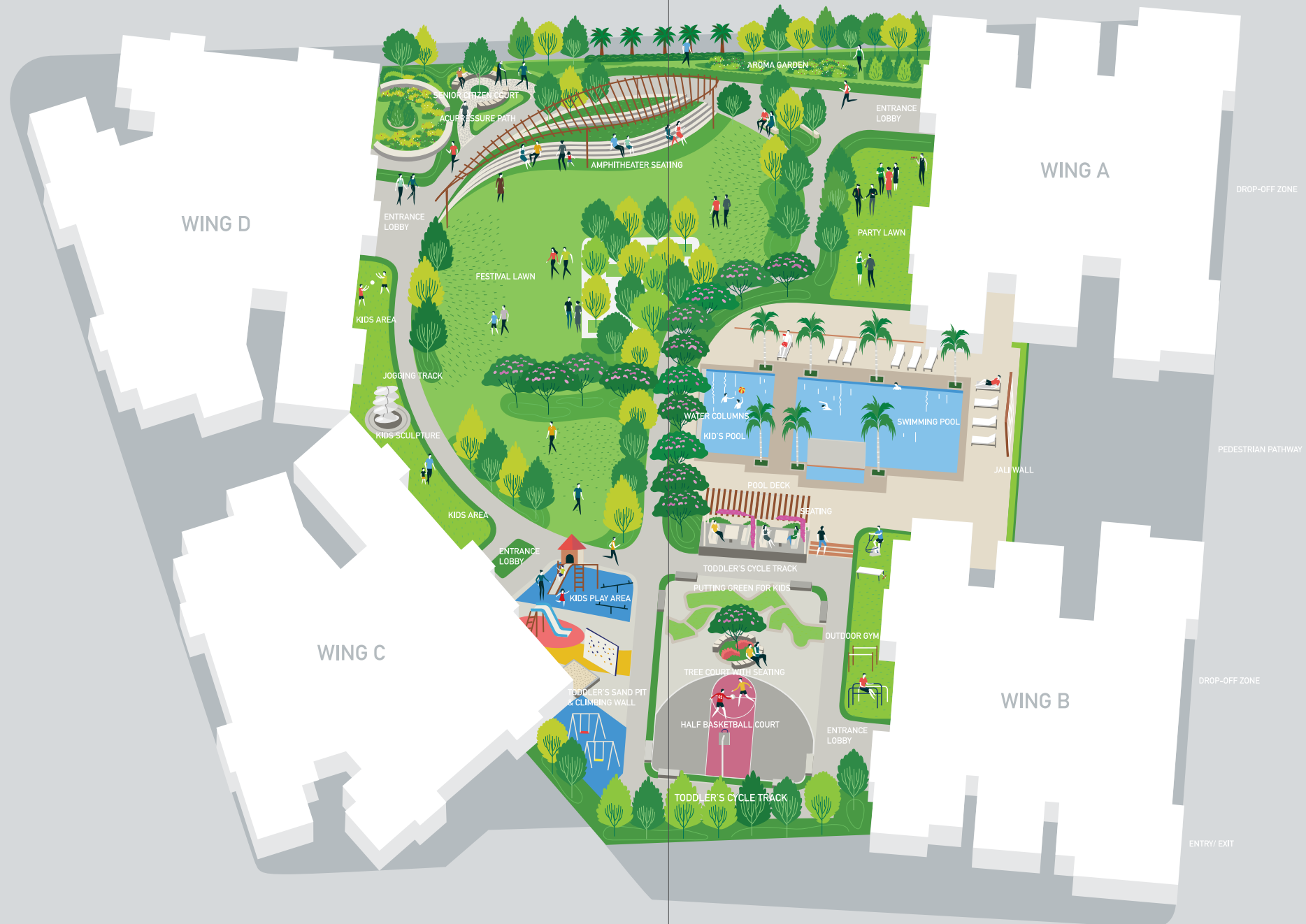
Additional security features:

- Child locks on all doors
- Holders near WC's for added assistance
- Anti-skid tiles

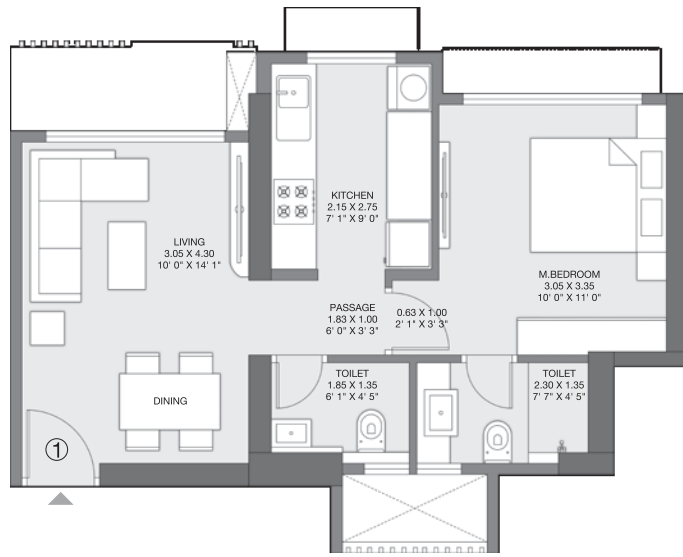
Master Layout Plan

LEGEND

- | | | | |
|-------------------------------------|---|-----------------------|---------------------------|
| 1. ENTRANCE LOBBY | 8. KIDS' SCULPTURE | 15. POOL DECK | 22. OUTDOOR PARTY LAWN |
| 2. PLANTATION ISLAND WITH SCULPTURE | 9. KIDS' PLAY AREA | 16. ADULTS' POOL | 23. MULTIPURPOSE LAWN |
| 3. BOTANICAL GARDEN | 10. TODDLERS' PLAY AREA | 17. KIDS' POOL | 24. YOGA/ZUMBA STUDIO |
| 4. JOGGING TRACK | 11. TODDLERS' CYCLE TRACK | 18. WATER FEATURE | 25. FITNESS CENTER |
| 5. AMPHITHEATER WITH PERGOLA | 12. MULTIPURPOSE COURT/BASKETBALL COURT | 19. WATER COLUMNS | 26. MEDITATION ROOM |
| 6. SENIOR CITIZEN AREA | 13. PUTTING GREEN FOR KIDS | 20. ACCUPRESSURE PATH | 27. KIDS' ACTIVITY CENTER |
| 7. OUTDOOR CRECHE AREA | 14. SEATING WITH TRELLIS | | |

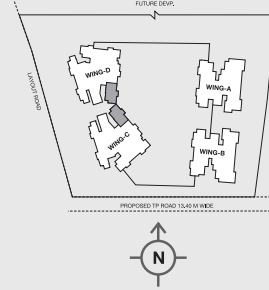


Unit Plan



GODREJ NEST KANDIVALI, MUMBAI

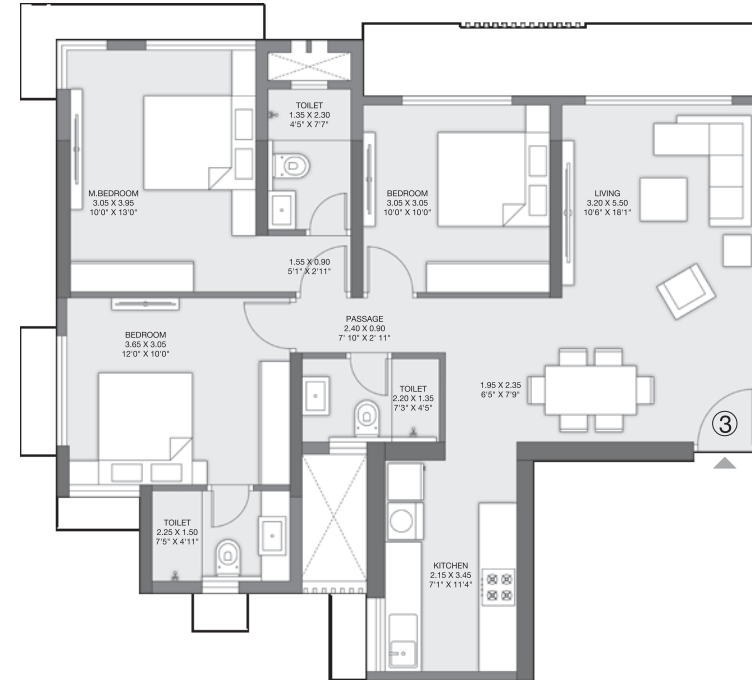
1 BHK



The furniture, decorative items, etc., shown in the plan are only suggested and the same are not intended or obligated to be provided as per specifications and/or service in the flat/unit and does not form part of the standard specifications. The plan represents unit series 1 of wing C 1 Sq m = 10,764 Sq ft.

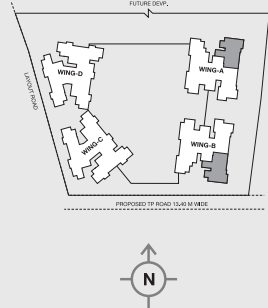


Unit Plan



GODREJ NEST KANDIVALI, MUMBAI

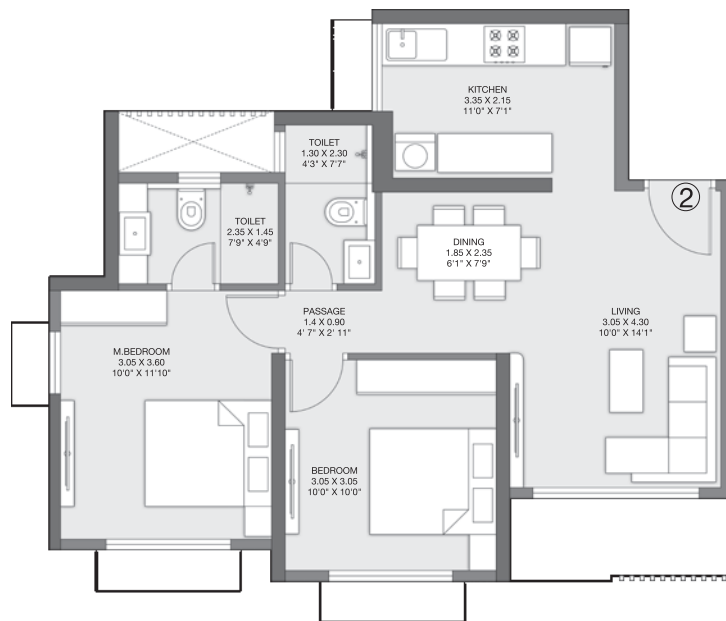
3 BHK



The furniture, decorative items, etc., shown in the plan are only suggested and the same are not intended or obligated to be provided as per specifications and/or service in the flat/unit and does not form part of the standard specifications. The plan represents unit series 3 of wing A 1 Sq m = 10,764 Sq ft.

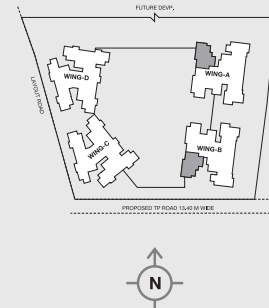


Unit Plan



GODREJ NEST KANDIVALI, MUMBAI

2 BHK



The furniture, decorative items, etc., shown in the plan are only suggested and the same are not intended or obligated to be provided as per specifications and/or service in the flat/unit and does not form part of the standard specifications. The plan represents unit series 2 of wing A 1 Sq m = 10,764 Sq ft.



PRODUCT CONFIGURATION

- Gated Community with 4 premium high rise towers
- Spacious 1, 2 and 3 bed residences
- 28+ amenities sprawling across 1 acre (0.404 hectare)
- 7 Tier Security System

GODREJ NEST LAUNCH OFFER

| TYPOLOGY | RERA CARPET AREA* (Sq.M.) | RERA CARPET AREA* (Sq.ft.) | AGREEMENT VALUE** |
|----------|---------------------------|----------------------------|-------------------|
| 1 BHK | 39.8 | 428 | ₹91 LAKH |
| 2 BHK | 56.3 | 606 | ₹1.45 CRORE |
| 3 BHK | 79.9 | 860 | ₹2.09 CRORE |

Pre-Book now to avail exclusive Pre-Launch price

Exclusive Pre-Launch Price for first 300 Pre-bookings only#

*The RERA CA includes the appurtenant area.

**The Agreement Value does not include Stamp Duty Registration, GST and Other Charges. #T&C Apply

*CC awaited for Wing B & C

*CC awaited for Wing B & C

A LEGACY OF TRUST

Godrej Properties brings the Godrej Group philosophy of innovation, sustainability, and excellence to the real estate industry. Each Godrej Properties development combines a 122-year legacy of excellence and trust with a commitment to cutting-edge design and technology.

In recent years, Godrej Properties has received over 200 awards and recognitions, including 'The Economic Times Best Real Estate Brand 2018', 'Builder of the Year' at the CNBC-Awaaz Real Estate Awards 2018, 'Real Estate Company of the Year' at the 8th Annual Construction Week India Awards 2018, India's Top Builders 2018 at the Construction World Architect and Builder (CWAB) AWARDS 2018 and the Golden Peacock National Quality Award – 2017 at the Institute Of Directors 27th World Congress on Business Excellence and Innovation.

IN THE LAST 3 YEARS, GODREJ PROPERTIES HAS RECEIVED OVER 200 AWARDS & RECOGNITIONS



Artist's Impression. Not an actual site photograph

Registered Office: Unit No. 5C, 5th Floor, Godrej One, Pirojshanagar, Eastern Express Highway, Vikhroli East, Mumbai - 400 079.

MahaRERA Registration No. for the projects "Godrej Emerald Thane": P51700000120, "Godrej Tranquil Kandivali": P51800000812, "Godrej Prime": P51800000519. This project is being developed by Godrej Redevelopers (Mumbai) Pvt. Ltd. (Subsidiary of Godrej Projects Development Limited), "Godrej City Panvel Phase I": P52000001298. Woods collectively refers to the names of the Towers in Godrej City Panvel Phase 1 i.e. Woods - Tower 1, Woods - Tower 2 and Woods - Tower 3. All available at website: <<http://maharera.mahaonline.gov.in/>>

MahaRERA No. P51800022159 available at website: <http://maharera.mahaonline.gov.in>. The project is being developed by Shivam Megastructures Private Limited and Godrej Properties Limited is the Development Manager. The project is mortgaged to PNB Housing Finance Limited and Yes Bank Limited.

The sale is subject to terms of the Application Form and the Agreement, including specification. Recipients are advised to apprise themselves of the necessary and relevant information of the project / offer prior to making any purchase decisions. The official website of Godrej Properties Ltd. is www.godrejproperties.com. Please do not rely on the information provided on any other website.

IN PARTNERSHIP WITH



PROJECT FUNDED BY



MahaRERA No. P51800022159 available at website: <http://maharera.mahaonline.gov.in>. The project is being developed by Shivam Megastructures Private Limited and Godrej Properties Limited is the Development Manager. The project is mortgaged to PNB Housing Finance Limited and Yes Bank Limited.

Site office: Godrej Properties Sales Pavilion, Near Lokhandwala Circle, Opposite Living Essence Building, Off Akurli Road, Lokhandwala Township, Akurli Road, Kandivali (East)

The sale is subject to terms of the Application Form and the Agreement, including specification. Recipients are advised to apprise themselves of the necessary and relevant information of the project / offer prior to making any purchase decisions. The official website of Godrej Properties Ltd. is www.godrejproperties.com. Please do not rely on the information provided on any other website.

The dimensions, images, furniture, accessories, paintings, additional fittings/fixtures, decorative items, false ceiling including finishing materials, shades, sizes and colour of the tiles and other details shown in the image are only indicative in nature and are only for the purpose of illustrating/indicating a possible layout and do not form part of the standard specifications/amenities/services to be provided in the flat. All specifications of the project/flat shall be as per the final agreement between the Parties. Recipients are advised to apprise themselves of the necessary and relevant information of the project prior to making any purchase decisions.